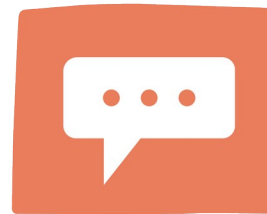
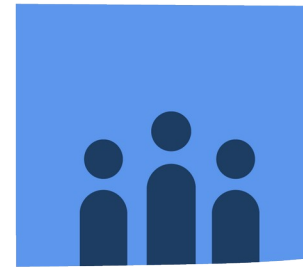
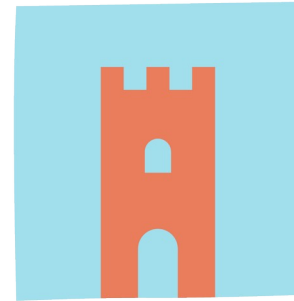
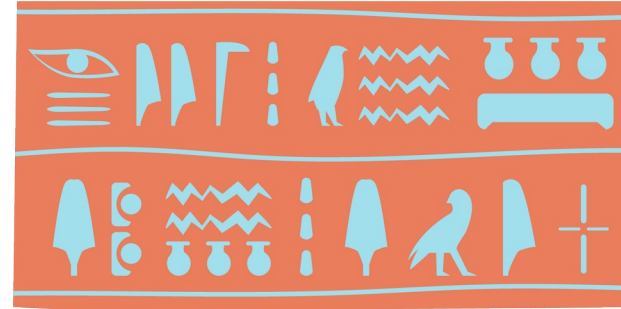


IAPH Heritage Interpretation case studies



Co-funded by
the European Union

Ecomuseum of the Caicena river. Almedinilla, Córdoba - Andalucía Interpretive programming project

It is a municipal initiative, following a balanced local development scheme and in accordance with the historical and natural heritage of the municipality, but in constant dialectical and critical debate. Use IP tools in programming and execution of activities since 1999.

Main selection criterias you meet and why

- Heritage values: provokes thinking or identity. Inclusive programming and storytelling, intersectional gender, etc. (Classroom of the peasantry; Festum dedicated to women; archeology at the service of social movements and historical memory...)
- Applying the HI strategies and TORE / Use of immersive techniques. Historical recreation activities (FESTUM); thematic visits (Cerro de la Cruz and museum centers); exhibition of the visitor center of the Roman villa site El Ruedo...
- Innovation/research and creativity
Participation in research projects and updating those of the IP with the results. Activities in continuous search for innovation, mixture of creativity and heritage ("WASQHA" Emerging Art Festival; Greco-Latin Youth Theater Festival; Skolion, Greco-Roman music group, The flight of Hypnos, Conference on sleep and dreams. ...)

Why it should be considered an IP good practice case

Use HI strategies to safeguard the heritage and well-being of the local community and its visitors.



TEHIC

Francisco Sousa Archaeological and Paleontological Museum, La Rinconada – Sevilla. Museum and programming

It is a municipal initiative that is born from an archaeological collection compiled by a local teacher and his students. Use HI tools in programming and execution of activities. It is a project of museography and programming of activities from the HI. Since 1998.

Main selection criterias you meet and why

- Heritage values: provokes thinking or identity
Inclusive programming and storytelling, intersectional gender, etc. (work with close and local historical issues in values of equality. Exhibitions and radio programs on historical memory, etc.)
- Applying the HI strategies and TORE / Use of immersive techniques
HI applied to the permanent exhibition and temporary exhibitions organized by the museum. Workshops and interpreted views at the archaeological site. HI training for university students.

Why it should be considered an IP good practice case

Use HI strategies to safeguard the heritage and and above all in the awareness of the population of their heritage.



TEHIC

Heritage Project Aroche, Huelva – Andalucía HI Activity

It is a comprehensive heritage management model developed by the City Council that integrates all the links in the heritage value chain: research, conservation, restoration, dissemination and socialization of heritage. It is fundamentally archaeological. The objective is to recover local heritage and its social profitability. Since 2004.

Main selection criterias you meet and why

- Programing services

The Diana festival (historical reenactment), related to the main Roman site in the town, also serves as an awareness campaign and manages to link the population with its heritage (120 people participate and collaborate). Every year the boys and girls practice in the summer, and school visits and educational notebooks are organized....

- Positive impact in the community.

Commitment of the population to the project, participating passively or actively in the activities.

Heritage values: provokes thinking or identity

The project works on the gender perspective and inclusion, such as making recreational places accessible to everyone.

Why it should be considered an IP good practice case

They use HI techniques and tools in awareness actions.



Projecte Patrimoni del Programa de Extensió Universitària de la Universitat Jaume I (PEU UJI) – Castellón (Valencia)

Accompaniment of HI local projects

It is a university initiative that is born from the Sociocultural Activities Service (SASC) of the Universitat Jaume I and reports to the Office of the Vice-Rector for Culture, Languages and Society. The programming of activities of the Patrimoni project is mainly based on the accompaniment of local groups of projects related to cultural heritage. The concept of heritage from which they start includes the IP as a strategy and communication tool, but it is applied in those projects that require it due to their nature.

Main selection criterias you meet and why

- Community engagement
 1. Co-creation: The projects are proposed by the group that demands the accompaniment
 2. Participation: The groups develop the project, it is their project with the accompaniment of a technician from Proyecto Patrimoni
 3. Attendance: of the selected recipient.

Why it should be considered an IP good practice case

This is a case of management and facilitation of heritage communities that uses the strategies and tools of the HI in those projects that accompany and require them.



Memòria Viva

11
2019

Publicación del proyecto Patrimoni
del Programa de Extensió Universitària. Universitat Jaume I de Castelló

Museum collection of Gilena (Seville) HI interpreting programming project

It is a local museum collection which develops an interpretive museography in most of the activities it carries out.

The most outstanding ones are a project of historical recreation and the experimental archaeology activities, focused on education and dissemination about Roman culture.

Main selection criterias you meet and why

- Community engagement
 - Co-creation: the community participate in the decisions and the design of the HI activities. There are also activities with level 2 and level 3 (i.e., attending the exhibition)t
 - Positive impact in the community: the village feels identified with the Collection and proud of it; and participate in the organization and design of the activities.
- Association of “Friends of Museum Collection of Gilena”, neighbourhood really involved.
- Innovation/Research and creativity
 - Renewal of traditional exhibition (display) way.
 - They have a laboratory of ideas and a group of cultural volunteers.
 - Exchange information, experiences ... with institutions from several countries.

Why it should be considered an IP good practice case

It uses HI strategies to safeguard and disseminate heritage. It is also a project of heritage socialization. The project contributes to the well-being of the local community, of the visitors, and of the participants of their projects.



TEHIC

Herstóricas (Granada and Madrid) - H Interpretation experience

It is a cultural and educational project in which trails, guided tours and/or workshops are developed, focused on the role of women in History (thematic). It provokes thinking on the absence of women's contributions to society in official history.

Also carry out interpretive visits to museums and community projects to recover the history of women from a HI perspective.

Main selection criterias you meet and why

- Community engagement
 - In some projects, it's co-creation (with women associations or neighbourhood who cooperate to design and create the activity); in others, it's participation (with local population involved); and in some other, it's just assistance.
- Heritage values.

All the activities incorporate a gender perspective, are inclusive and emphasise social diversity throughout history. They fight genre stereotypes and promote equality.
- Applying HI strategies.
 - They use role dynamics and look for visitor's empathy and participation.
 - TORE: thematic (role of women in History) and enjoyable (interactive act.).
 - Immersive techniques: people listen "recordings" with sounds from radio programs of the period of the HI activity.

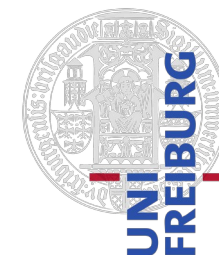
Why it should be considered an IP good practice case

It uses HI strategies to safeguard and disseminate women history and heritage. The experiences contribute to the recognition of the role of women in History and to the self-affirmation of the own participants (from the local community).





Partners



Co-funded by
the European Union

Funded by the European Union. Views and opinions expressed are however those of the author(s) only and do not necessarily reflect those of the European Union or the European Education and Culture Executive Agency (EACEA). Neither the European Union nor EACEA can be held responsible for them.