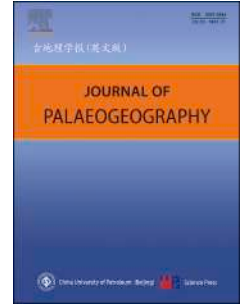


Journal Pre-proof



Early Pleistocene vertebrate tracks impressed on Oligocene beds from the southernmost Iberian Peninsula: Palaeogeographic implications

Eduardo Mayoral, Antonio Rodríguez Ramírez, Jérémy Duvéau, Ricardo Díaz-Delgado, Juan Antonio Morales, Eloísa Bernáldez Sánchez, Esteban García-Viñas, Ana Santos, Mili Jiménez Melero, Milagros Alzaga, Ignacio Díaz-Martínez

PII: S2095-3836(25)00026-4

DOI: <https://doi.org/10.1016/j.jop.2025.01.004>

Reference: JOP 234

To appear in: *Journal of Palaeogeography*

Received Date: 29 June 2024

Revised Date: 31 December 2024

Accepted Date: 15 January 2025

Please cite this article as: Mayoral, E., Ramírez, A.R., Duvéau, J., Díaz-Delgado, R., Morales, J.A., Sánchez, E.B., García-Viñas, E., Santos, A., Melero, M.J., Alzaga, M., Díaz-Martínez, I., Early Pleistocene vertebrate tracks impressed on Oligocene beds from the southernmost Iberian Peninsula: Palaeogeographic implications, *Journal of Palaeogeography*, <https://doi.org/10.1016/j.jop.2025.01.004>.

This is a PDF file of an article that has undergone enhancements after acceptance, such as the addition of a cover page and metadata, and formatting for readability, but it is not yet the definitive version of record. This version will undergo additional copyediting, typesetting and review before it is published in its final form, but we are providing this version to give early visibility of the article. Please note that, during the production process, errors may be discovered which could affect the content, and all legal disclaimers that apply to the journal pertain.

© 2025 The Author(s). Published by Elsevier B.V. on behalf of China University of Petroleum (Beijing).

**EARLY PLEISTOCENE VERTEBRATE TRACKS IMPRESSED ON
OLIGOCENE BEDS FROM THE SOUTHERNMOST IBERIAN PENINSULA:
PALAEOGEOGRAPHIC IMPLICATIONS**

Eduardo Mayoral^{1,2*}, Antonio Rodríguez Ramírez^{1,2}, Jérémy Duveau^{3,4,5}, Ricardo Díaz-Delgado⁶, Juan Antonio Morales^{1,2}, Eloísa Bernáldez Sánchez⁷, Esteban García-Viñas⁷, Ana Santos⁸, Mili Jiménez Melero⁹, Milagros Alzaga⁹, Ignacio Díaz-Martínez¹⁰

¹ Departamento de Ciencias de la Tierra, Facultad de Ciencias Experimentales, Campus de El Carmen, Universidad de Huelva, 21071 Huelva, Spain, mayoral@uhu.es

² CCTH-Centro de Investigación Científico Tecnológico, Universidad de Huelva, 21071, Huelva, Spain

³ Paleoanthropology, Institute for Archaeological Sciences, Department of Geosciences, Eberhard Karls University of Tübingen

⁴ DFG Center for Advanced Studies “Words, Bones, Genes, Tools: Tracking Linguistic, Cultural and Biological Trajectories of the Human Past”, Eberhard Karls University of Tübingen, Rümelinstrasse 23, 72070 Tübingen, Germany, jeremy.duveau@mnhn.fr

⁵ UMR 7194 Histoire Naturelle de l’Homme Préhistorique, CNRS, Muséum National d’Histoire Naturelle, Université Perpignan Via Domitia, Paris, France.

⁶ LAST (Remote Sensing & GIS Lab), Estación Biológica de Doñana-CSIC, 41092 Sevilla, Spain, rdiaz@ebd.csic.es

⁷ Laboratorio de Paleobiología del Instituto Andaluz del Patrimonio Histórico, 41092 Sevilla, Spain. eloisa.bernaldez@juntadeandalucia.es, esteban.garcia@juntadeandalucia.es,

⁸ Departamento de Geología, Facultad de Geología, Campus de Llamaquique, Universidad de Oviedo, Oviedo, Spain, asantos@uniovi.es

⁹ Centro de Arqueología Subacuática (CAS), Cádiz, Instituto Andaluz de Patrimonio Histórico, milijm@hotmail.com; milagros.alzaga@juntadeandalucia.es

¹⁰ Departamento de Ciencias de la Tierra y Física de la Materia Condensada, Facultad de Ciencias, Universidad de Cantabria, 39005 Santander, Cantabria, Spain, ignacio.diaz@unican.es

*Corresponding author.

E-mail address: mayoral@uhu.es

Acknowledgements

This article has been published under the R+D+i Project within the Complementary Marine Science Plan framework and the Plan for Recovery, Transformation and Resilience of the Andalusian Regional Government (PCM-00096): *Vestigium. Intertidal Archaeology and Palaeobiology. Heritage on the beaches of Cadiz as an economic engine and social participation*; the Project PID2019-104625RB-100, funded by MCIN/AEI/ 10.13039/501100011033 and has been financially supported by the

Andalusian Government to the Research Group RNM276, RNM353 and by the Centro Científico-Tecnológico de Huelva (CCTH). ID-M is supported by a Ramón y Cajal fellowship (RYC-2022) granted by the Ministerio de Ciencia e Innovación (Spanish Government). We would also like to thank Adri Blázquez Riola for the images illustrating the reconstruction of the area's fauna and landscape.

Declaration of Interest statement.

The authors declare that they have no known competing financial interests or personal relationships that could have appeared to influence the work reported in this paper.

Authors Emails

Eduardo Mayoral: mayoral@uhu.es

Antonio Rodríguez Ramírez: arodri@uhu.es

Jérémy Duveau: jeremy.duveau@mnhn.fr

Ricardo Díaz-Delgado: rdiaz@ebd.csic.es

Juan Antonio Morales: jmorales@uhu.es

Eloísa Bernáldez Sánchez: eloisa.bernaldez@juntadeandalucia.es

Esteban García-Viñas: esteban.garcia@juntadeandalucia.es

Ana Santos: asantos@uniovi.es

Mili Jiménez Melero: milijm@hotmail.com

Milagros Alzaga: milagros.alzaga@juntadeandalucia.es

Ignacio Díaz-Martínez: ignacio.diaz@unican.es

Brief introduction of First Author and Corresponding Author

I received a degree in Geological Sciences from the University of Zaragoza in 1981 and a PhD from the University of Seville in 1986. I am currently Professor of Palaeontology at the University of Huelva.

My main research interests are focused on the Palaeontology, Palaeoichnology, Taphonomy, and Palaeoecology during the upper Cenozoic (Miocene-Quaternary) and lower Palaeozoic (Cambrian), as well as on aspects of protection, conservation and promotion of Palaeontological Heritage.

Early Pleistocene vertebrate tracks impressed on Oligocene beds from the southernmost Iberian Peninsula: Palaeogeographic implications

Eduardo Mayoral^{a,b*}, Antonio Rodríguez Ramírez^{a,b}, Jérémy Duveau^{c,d,e}, Ricardo Díaz-Delgado^f, Juan Antonio Morales^{a,b}, Eloísa Bernáldez Sánchez^g, Esteban García-Viñas^g, Ana Santos^h, Mili Jiménez Meleroⁱ, Milagros Alzagaⁱ, Ignacio Díaz-Martínez^j

^a *Departamento de Ciencias de la Tierra, Facultad de Ciencias Experimentales, Campus de El Carmen, Universidad de Huelva, 21071 Huelva, Spain*

^b *CCTH-Centro de Investigación Científico Tecnológico, Universidad de Huelva, 21071, Huelva, Spain*

^c *Paleoanthropology, Institute for Archaeological Sciences, Department of Geosciences, Eberhard Karls University of Tübingen, Rümelinstrasse 23, 72070 Tübingen, Germany*

^d *DFG Center for Advanced Studies “Words, Bones, Genes, Tools: Tracking Linguistic, Cultural and Biological Trajectories of the Human Past”, Eberhard Karls University of Tübingen, Rümelinstrasse 23, 72070 Tübingen, Germany*

^e *UMR 7194 Histoire Naturelle de l’Homme Préhistorique, CNRS, Muséum National d’Histoire Naturelle, Université Perpignan Via Domitia, Paris, France*

^f *LAST (Remote Sensing & GIS Lab), Estación Biológica de Doñana-CSIC, 41092 Sevilla, Spain*

^g *Laboratorio de Paleobiología del Instituto Andaluz del Patrimonio Histórico, 41092 Sevilla, Spain*

^h *Departamento de Geología, Facultad de Geología, Campus de Llamaquique, Universidad de Oviedo, Oviedo, Spain*

ⁱ *Centro de Arqueología Subacuática (CAS), Cádiz, Instituto Andaluz de Patrimonio Histórico, Spain*

^j *Departamento de Ciencias de la Tierra y Física de la Materia Condensada, Facultad de Ciencias, Universidad de Cantabria, 39005 Santander, Cantabria, Spain*

Abstract The southern of the Iberian Peninsula preserves a diverse ichnological record of vertebrates from the late Neogene–Quaternary. While the ages of several tracksites, such as those from the Miocene–Pliocene transition and the middle-late Pleistocene, are well-established, others remain undated or have unknown ages. This paper reports the discovery of the southernmost tracksite in the Iberian Peninsula and continental Europe on the Island of Tarifa (Cádiz). The tracksite contains over 600 vertebrate footprints from the early Pleistocene

*Corresponding author email address: mayoral@uhu.es

that are grouped in four morphotypes. Morphotypes 1, 2 and 3 are predominantly didactyl-shaped, rounded to ovoid and elongated, and associated with tracks left by artiodactyls. Morphotype 4, suboval to subcircular in outline, is the largest and is probably related to the imprint left by proboscideans.

We also document the progressive transition from morphotype 2 with isolated, rounded footprints to morphotype 3 with elongated tracks formed by overlapping two tracks of the same animal which is observed. The consistency of the substrate, together with the trackmaker limb dynamics, conditioned the final morphology of the tracks, which were produced in a very soft clay-rich substrate of late Oligocene, that was folded and tilted in the latest Pliocene. This relief configuration gave rise to a narrow, partially or totally flooded corridor through which the trackmaker animals passed continuously, simultaneously, and in opposite ways. This discovery from the southernmost tip of continental Europe is the first one from the early Pleistocene in the Iberian Peninsula and a rare example from the Mediterranean region.

Keywords: Ichnology, Artiodactyls, Proboscideans, Footprint overlapping, Tarifa (Spain)

Received 25 May 2024; revised 31 December 2024; accepted 2025; available online xxx

1. Introduction

In recent years, southern Iberia has become a key location for understanding the late Neogene–Quaternary vertebrate ichnological record of the Mediterranean region. Specifically, middle and upper Pleistocene tracksites related to coastal deposits have been found in the south of Portugal and the west of Andalusia, yielding a very diverse fauna: hominins, proboscideans, cervids, bovids, ursids, canids, lagomorphs and birds (e.g., Neto de Carvalho, 2009; Neto de Carvalho *et al.*, 2016, 2020a, b, 2022, 2023; Muñiz *et al.*, 2019; Neto de Carvalho and Belo, 2022; Mayoral *et al.*, 2021, 2022). Moreover, the Iberian Peninsula also preserves, tracks of

ursids, proboscideans, equids, artiodactyls, canids and birds from the late Neogene (Miocene–Pliocene transition) (Lancis and Estévez, 1992; Doyle *et al.*, 2000; Fierro Bandera *et al.*, 2014; McCann *et al.*, 2018). However, until today, the vertebrate ichnological record between the late Pliocene and early Pleistocene is unknown.

Recently, a new locality with hundreds of vertebrate tracks has been found in the southernmost part of the Iberian Peninsula on the Atlantic coast of Cadiz, Tarifa Island Beach (Figs. 1-8). The tracks formed during a regression that occurred at the end of the late Pliocene, and transgressive pulses that occurred during the Pleistocene in this area (González Lastra *et al.*, 1990, Lario, 1996, Zazo *et al.*, 1999, Gracia *et al.*, 2004). Surprisingly, the tracks are atop of tilted and eroded Oligocene turbidites, making the discovery even more peculiar (Fig. 1). The discovery of this tracksite, the southernmost in continental Europe, allows us to discuss vertebrate faunas of a coastal setting in the early Pleistocene. The tracksite formed over a much older folded substrate that emerged previous to the formation of the tracks.

The objectives of this work are: i) to describe and compare this new ichnological record; ii) to designate tracks taxonomically; iii) to analyse the formation and preservation of the different morphotypes; and iv) to discuss the age of tracks and landscape evolution of the tracksite.

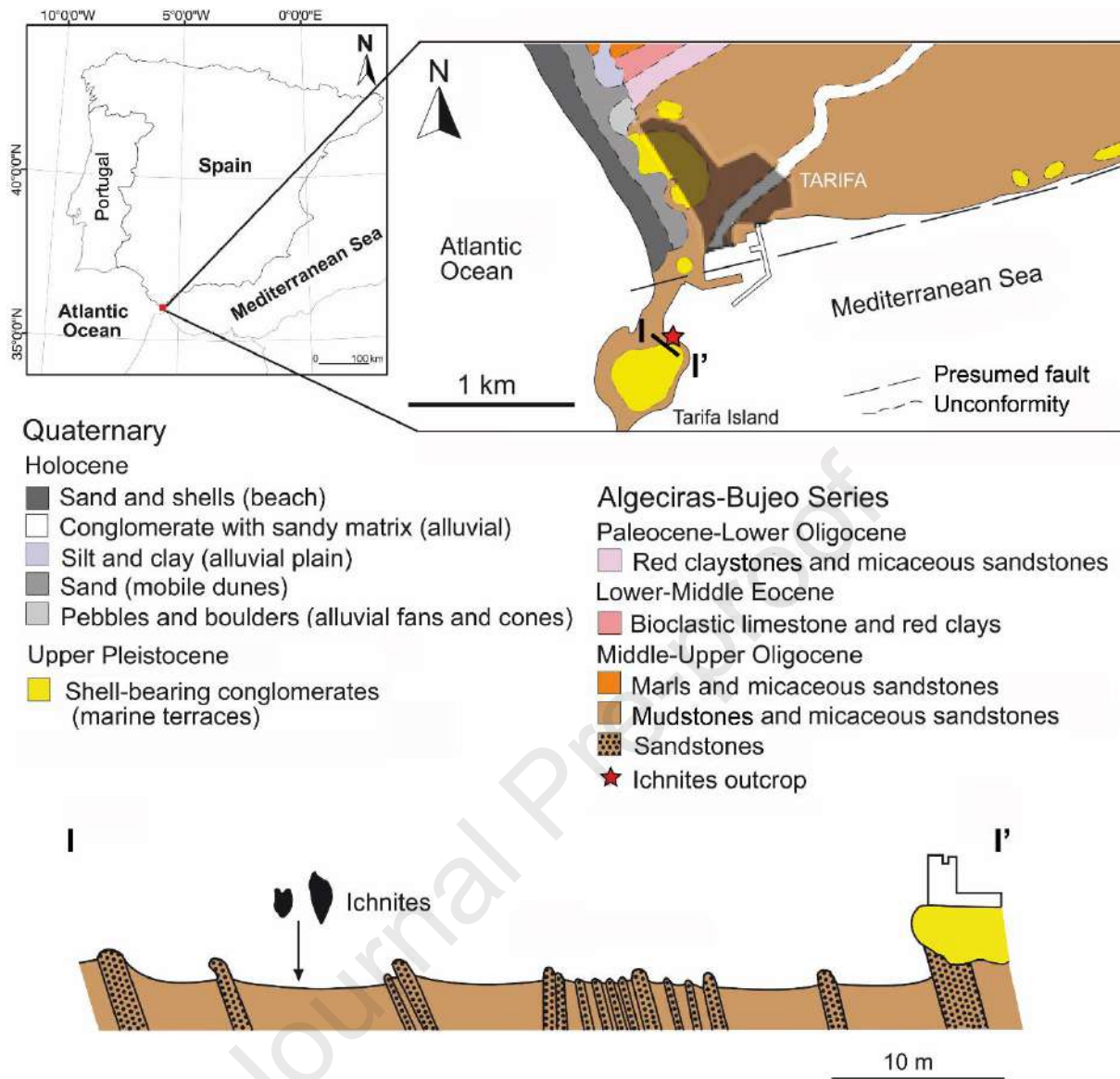


Fig. 1 Geographical and geological location of the footprint site

2. Geographical and geological setting

The tracksite is in the current intertidal zone of the beach of the Tarifa Island, province of Cadiz, also known as Isla de las Palomas. This island is currently connected to land by a road (Figs. 1, 2A), located south of the town of Tarifa and whose south edge, the Punta de Tarifa, represents the southernmost point of the Iberian Peninsula. Technically an island, its proximity to the mainland (150 m), the continuity of geological structures and the development

of beaches on both sides of the link road mean that it can be considered the southernmost point of continental Europe. (coordinates 36°00'10"N, 5°36'36"W).

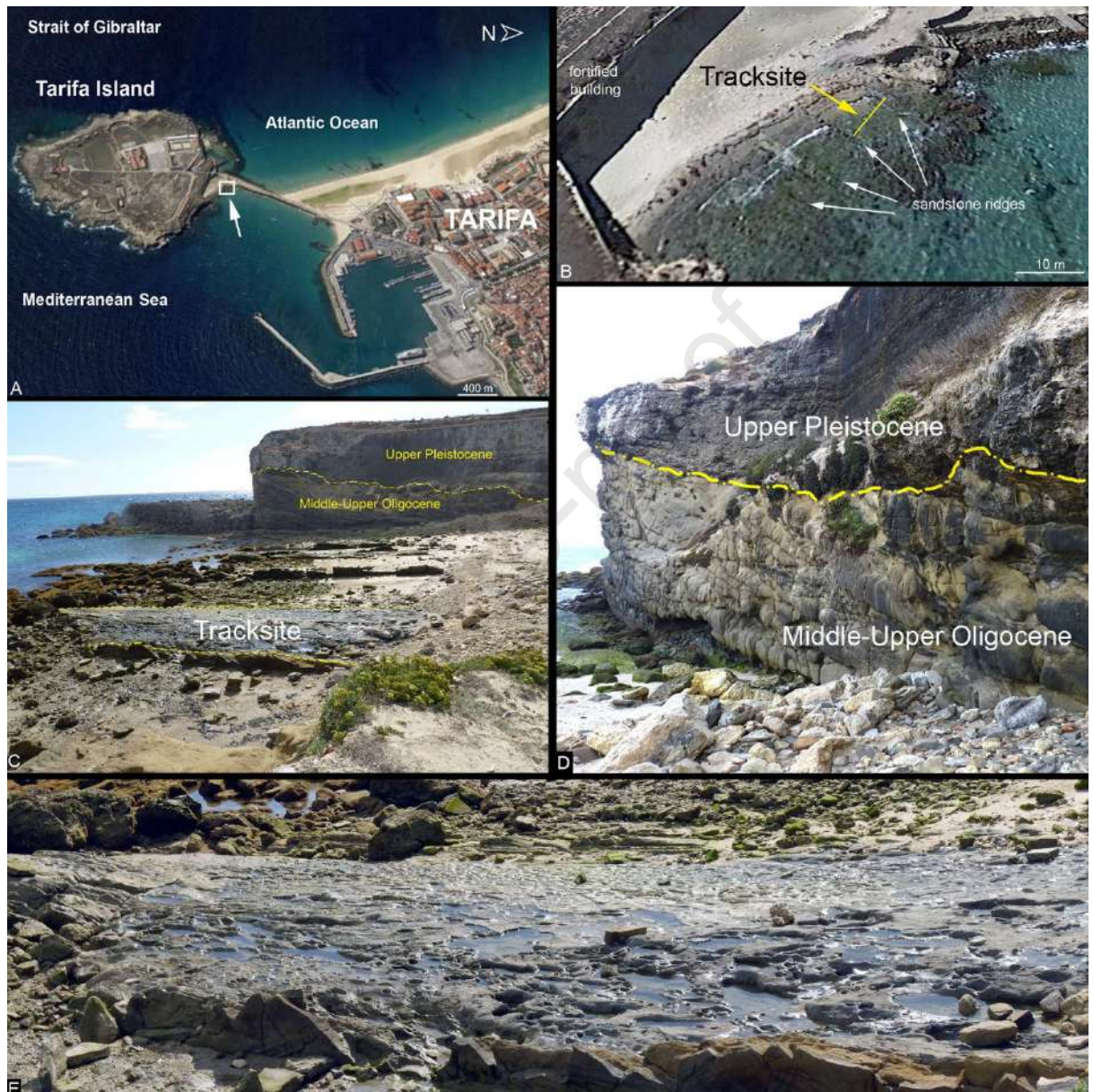


Fig. 2 Outcrop views. **A)** General view (Source Google Earth). White box (arrow): location of the outcrop; **B)** Detail view; **C)** View of the tilted Oligocene succession and its contact with Quaternary marine conglomerates; **D)** Detail view of the angular unconformity (dashed yellow line); **E)** Site detail with the trampled surface of the Oligocene bluish-grey mudstones.

The vertebrate tracks are preserved on a grey-bluish mudstone-dominated unit of about 8 m in thickness (Figs. 1–8). It corresponds to a succession of micaceous sandy-turbidite deposited on a shelf margin. These fine-grained rocks are part of the Algeciras-Bujeo Series (Fig. 1), containing a rich association of nannoflora of middle-late Oligocene age (zones NP 24; NP 25 from Martini, 1971) (González Lastra *et al.*, 1990).

The turbidites are tilted in NNW-SSE compression in the late Oligocene and later further deformed by extension in the late Miocene (Tortonian–Messinian) (González Lastra *et al.*, 1990). Post-tectonic sedimentation events are represented by transgressive deposits consisting of yellow sandstones with some carbonates that formed in a coastal marine setting in the early Pliocene.

Overall, the differential erosion of prominent sandstone beds and the less resistant mudstones between them generates a large-scale, shallow trough-like topography, with the sandstones forming the walls and the mudstones constituting the floor of the trough (Figs. 1, 2, and 4).

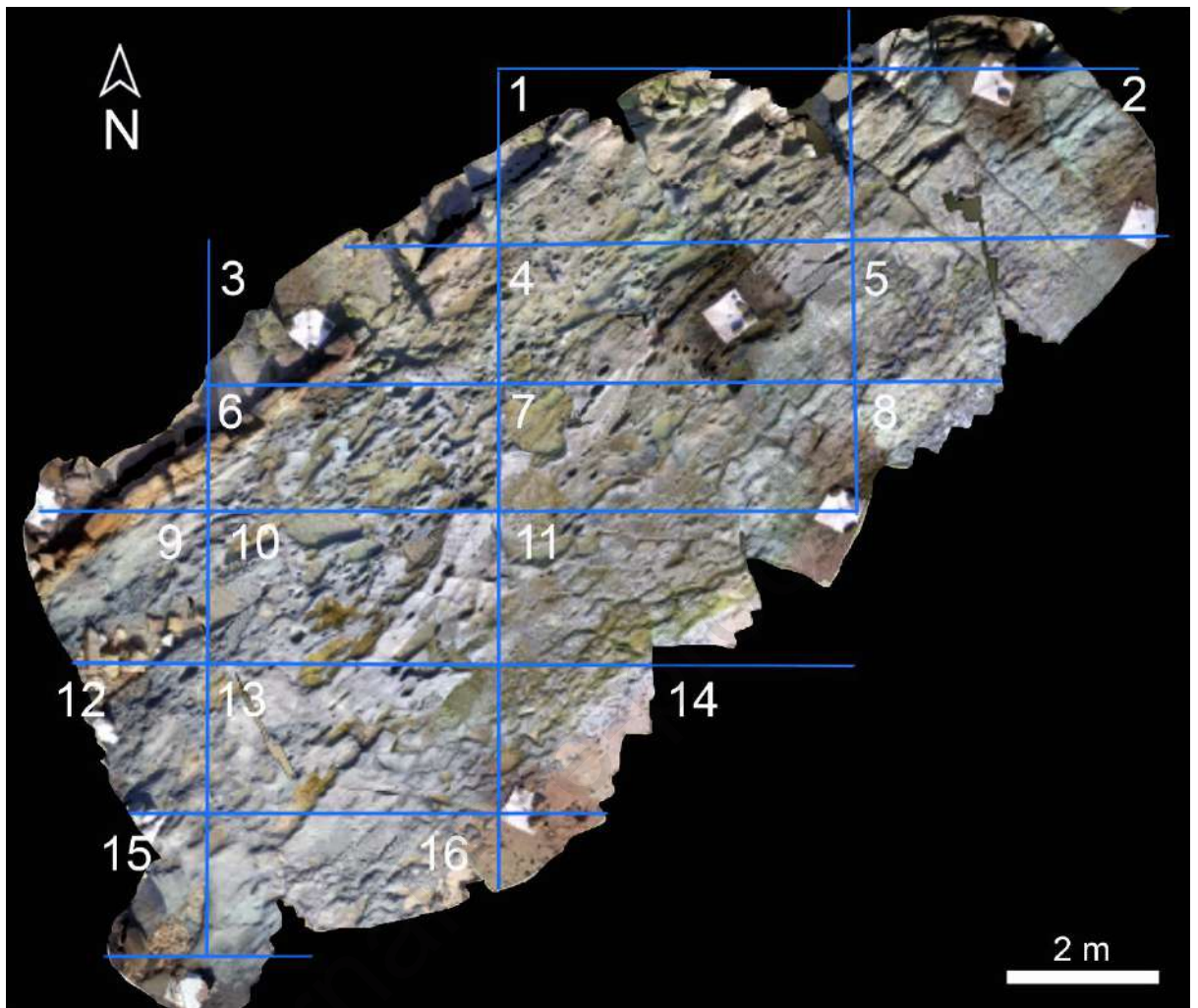


Fig. 3 Orthomosaic of the trampled surface with the grids established for the footprint study

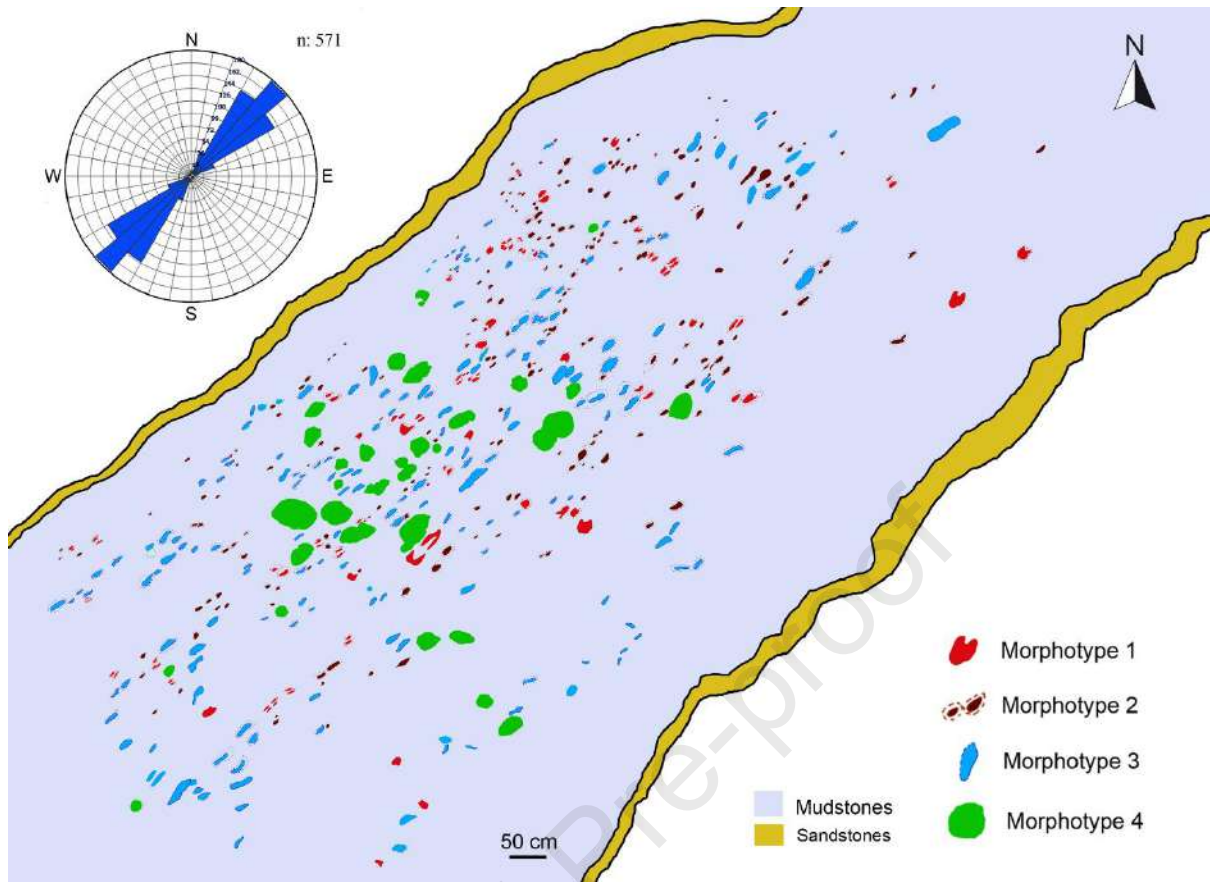


Fig. 4 Spatial distribution of the four track morphotypes along the muddy corridor between the two sandstone ridges and NE-SW orientation of the footprints shown in a rose diagram.

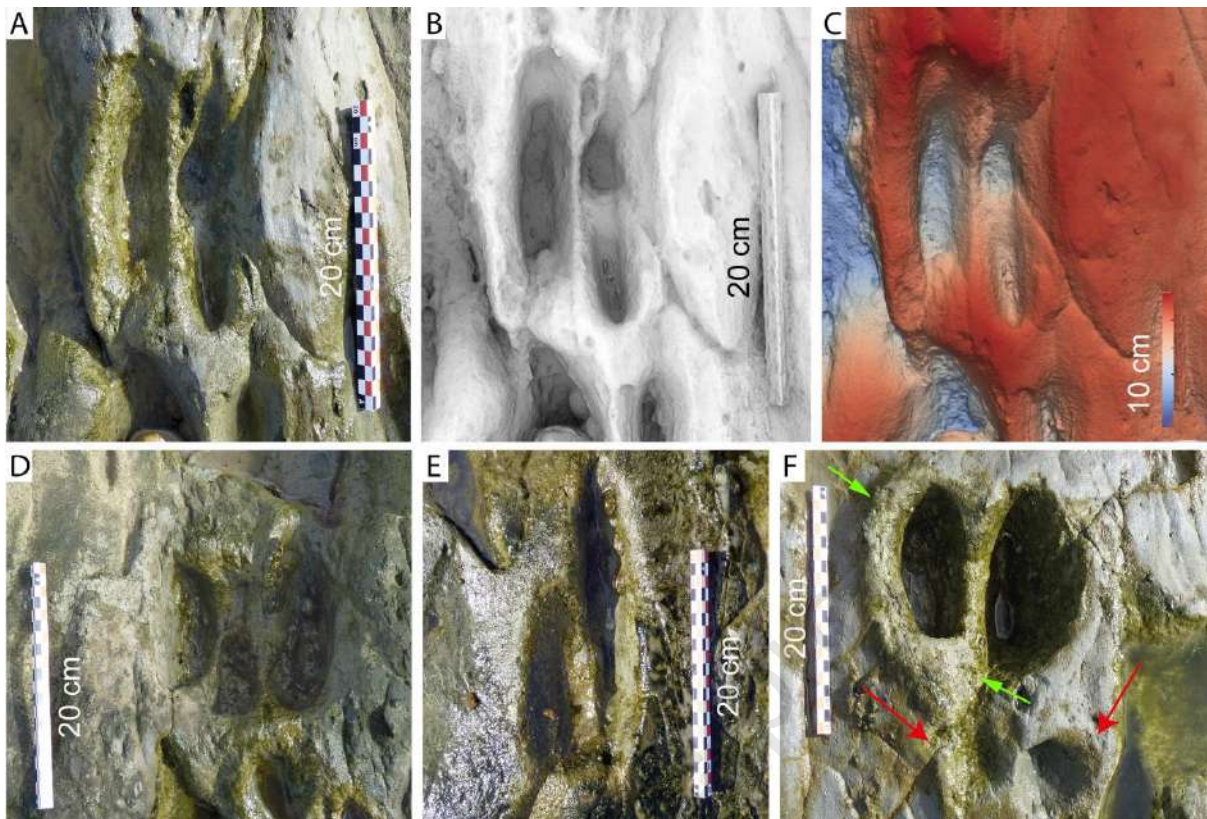


Fig. 5 Examples of Morphotype 1 tracks. **A), B), and C)** are images of the same track, where **A)** is an orthophoto, **B)** is an occlusion image, and **C)** is a color depth map. **D-F)** Orthophotos of other Morphotype 1 tracks. Red arrows in **F)** indicate digit impressions of a poorly preserved track. The green arrows in **F)** point to the expulsion rims.

3. Material and methods

The Tarifa Island Beach tracksite was discovered by Miguel Cano Molina in September 2021. Since the outcrop is in the intertidal zone, it can only be studied during low tide, which limits the time for data collection, photography, and surface scanning. Field work was performed in 2021 and the entire surface was digitalised using a Leica BLK2GO Handheld Laser Scanner. Canon EOS 77D coupled with a macro lens Canon 100 mm f/2.8L was used to prepare detailed 3D photogrammetric models following the general methodology of Mallison and Wings (2014) and Falkingham *et al.* (2018). The photogrammetric 3D models were

processed in Agisoft Metashape Professional version 1.1.4. software (<https://www.agisoft.com/>) and converted to occlusion images in the same software and colour depth maps in the open-source software Paraview 4.4.0 version (<http://www.paraview.org/>).

The identification of tracks, as well as their dimensional parameters and abundance percentages have been obtained from field observations and the orthomosaic images generated from laser scanning (Fig. 3). In order to proceed with the study and subsequent orientation of the tracks, the surface was divided into 16 grid squares (Fig. 3) and documented in a 2D cartography (Fig. 4). The preservation quality of the tracks is determined following the proposal of Marchetti *et al.* (2019). To clarify the terminology used, it is considered that the sediment surface on which the trackmaker walked is referred to as the "tracking surface" (Fornós *et al.*, 2002), while the imprint left on that surface is called a "true track" (Lockley, 1991). In the didactyl tracks, the length and width were measured based on the general works (see Díaz-Martínez *et al.*, 2020). In the poorly preserved tracks, the longest axis is considered as length, and its perpendicular axis is the width. Considering that there are no clearly preserved individual trackways, the orientation patterns were examined by plotting Stereonet online (<https://app.visiblegeology.com/stereonet.html>) in a rose diagram, with the information of individual tracks (Fig. 4). The track orientation is measured as the angle between the track axis and the magnetic north thus it shows the orientation of movement, but not its direction represented as a line with values between 0° and 180° (see Díaz-Martínez *et al.*, 2020).

4. Results

4.1 Ichnological descriptions

A total of 635 tracks have been identified in the Tarifa Island Beach tracksite (Fig. 4; Table 1). The surface has an approximate area of 100 m² and is moderately trampled (*sensu* the bioturbation index of Lockley and Conrad, 1989), hampering the identification of

individual trackways. There is no evidence of layering inside the tracks that would suggest the presence of underprints or overtracks in the studied surface. Moreover, the tracks present variable depth and extrusion rims, suggesting that all the tracks are probably true tracks on a tracking surface (see above).

In general, the shape of the tracks is variable, commonly including didactyl, rounded to ovoid and elongate forms. Four morphotypes have been identified based on the overall morphology of the tracks.

4.1.1. Morphotype 1 (M1) (Fig. 5A-F). They are didactyl, showing two symmetrical and parallel-arranged digit imprints, and have a well-defined outline. The tracks present separated digit traces, that have been individually measured (Fig. 5A-E). Generally, they are large and are always longer than wide (10.8 cm long, 4.8 cm wide on average, Table 1; Supplementary Table S1). It is difficult to differentiate between the impression of the anterior and posterior surfaces of the foot because the imprints are semi-symmetrical and rounded. Elongated digit impressions have also been identified as associated with the tracks related to the degree of autopod slippage (Fig. 5A, E). They lack lateral (crew) digit impressions even in the depth tracks.

Most footprints have sharply defined expulsion rims, measuring 1–5 cm in width and 2–5 cm in depth. This characteristic makes the footprints well-marked. These tracks are equivalent to grade 1–1.5 of Marchetti *et al.* (2019), which suggests that they provide good information about the trackmaker and can be related to a previously defined ichnogenus. This morphotype is not very abundant (110 tracks) and represents 17% of the total (Table 1), being intermediate in size between the other morphotypes.

4.1.2. Morphotype 2 (M2) (Fig. 6A–L). Tracks with a subrounded to subovate contour, more or less elongated, smaller in size than Morphotype 1 (between 6.2 cm in average length and 2.9

cm width, Table 1; Supplementary Table S2), which may appear isolated (Fig. 6A, J, L) or in groups of two individualised tracks, one behind the other or one next to the other (Fig. 6D, G). When they are preserved in pairs of two, usually one track is significantly larger than the other (Fig. 6D, G). Moreover, some of them have didactyl shapes with very poorly preserved digit impressions (Fig. 6A). The depth of the tracks varies 4–10 cm, and the tracks preserve well-developed expulsion rims. The tracks of this morphotype are equivalent to the grade 1 of Marchetti *et al.* (2019). This morphotype is one of the most abundant at the Tarifa Island tracksite (231 tracks, 35%, Table 1).

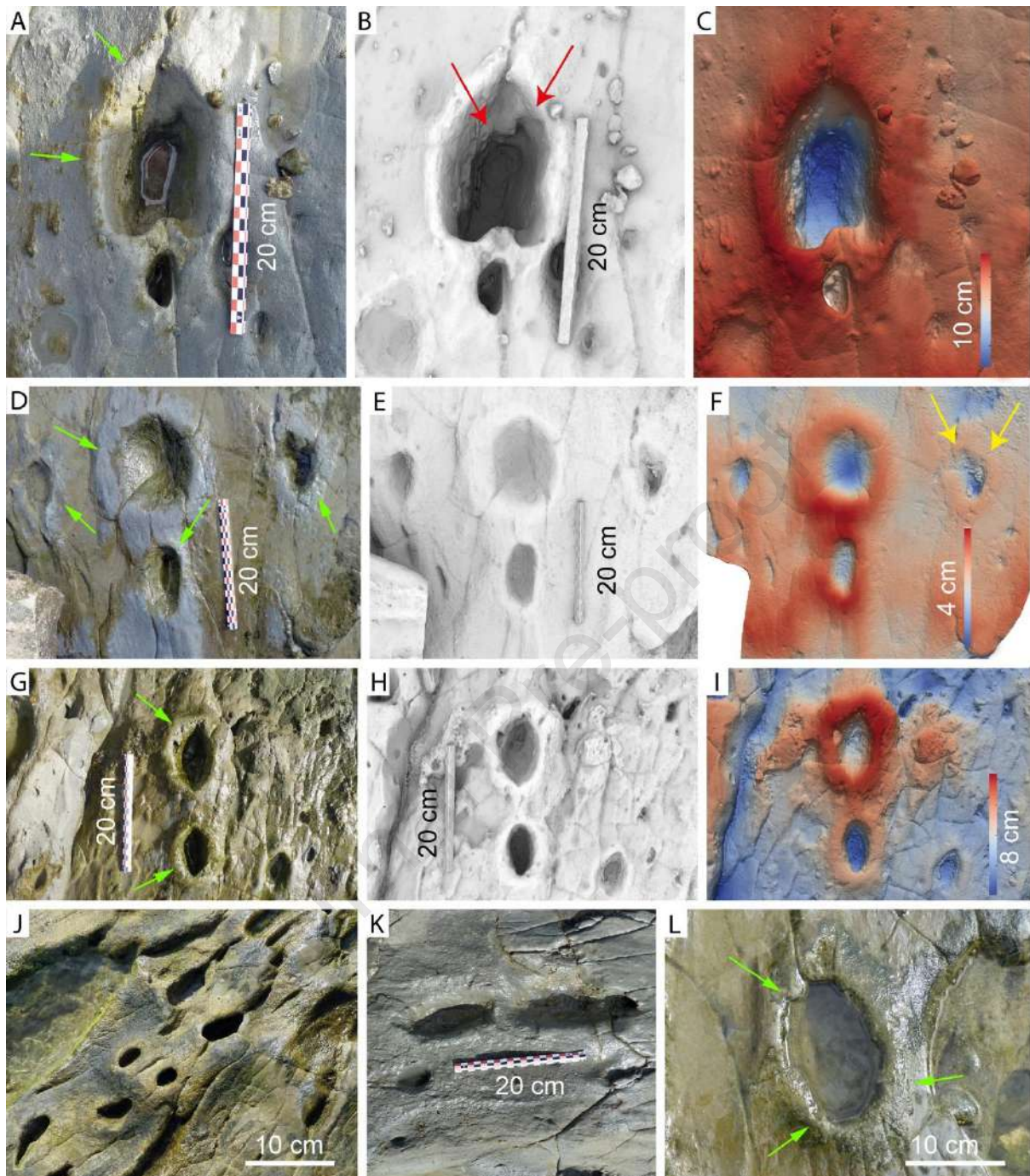


Fig. 6 Examples of Morphotype 2 tracks. **A), B) and C)** are images of the same track, where A) is an orthophoto, B) is an occlusion image, and C) is a blue to red color depth map; **D), E) and F)** Same images from another track; **D)** Orthophoto; **E)** Occlusion image; **F)** Blue to red color depth map where yellow arrow indicated Morphotype 1 track. **G, H, and I)** another track; **G)** Orthophoto; **H)** Occlusion image; **I)** Blue to red color depth map; **J)** Series of different tracks; **K)** Elongated track; **L)** Detail of another track. The green arrows in D, A, G, and L point to the expulsion rims.

4.1.3 Morphotype 3 (M3) (Fig. 7A–J). It is characterized by having an elongated shape (12.7 cm length on average, Table 1), simple (Fig. 7C–H, J) or divided into two parts (Fig. 7A–B; I–J). The footprints apparently lack anatomical features, but based on detailed observations of the 3D models, they sometimes show the impression of two elongated digits or claw traces (Fig. 7A, B, I). It is even observed that the elongate shape of this morphotype is formed by the superposition of two consecutive tracks (manus and pes) which can be up to 6 cm deep. The tracks are poorly preserved, equivalent to the grade 0–1 of Marchetti *et al.* (2019). They are the most numerous footprints (257 tracks, 40%, Table 1; Supplementary Table S3).

4.1.4 Morphotype 4 (M4) (Fig. 8). These are the largest tracks, generally subovate or subcircular in shape, with an average length and width of 19.1×15.8 cm (Table 1), though the contours are sometimes very irregular. Erosion has created depressions up to 19 cm deep, complicating accurate observation of the tracks. These tracks are equivalent to the grade 0–0.5 of Marchetti *et al.* (2019). These footprints are the least frequent (39 tracks, 7%, Table 1; Supplementary Table S4) and are preferentially located in the central area of the corridor.

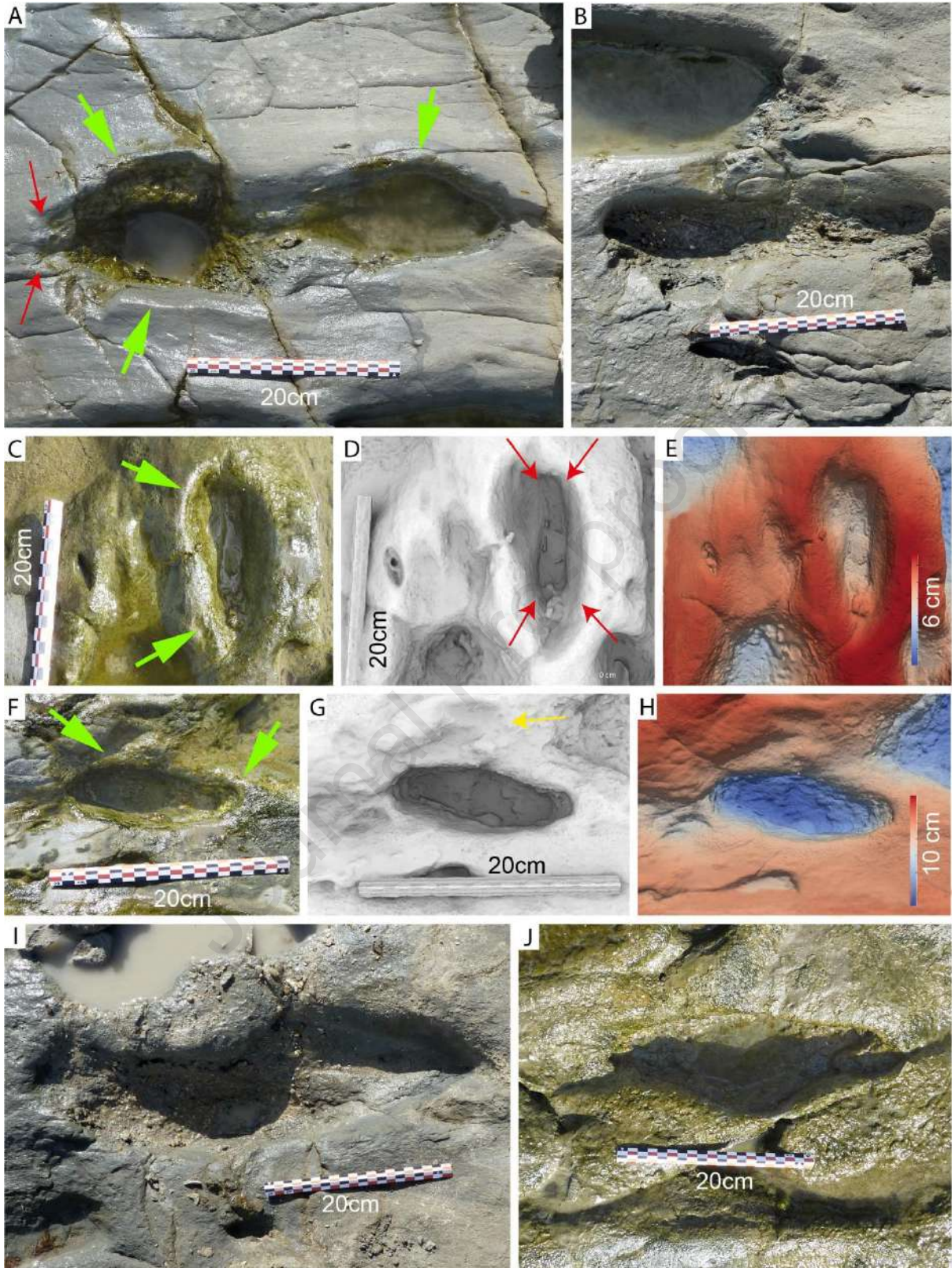


Fig. 7 Examples of Morphotype 3 tracks. **A) and B)** Orthophotos of different tracks; **C), D) and E)** are images of the same track, where C) is an orthophoto, B) is an occlusion image with red arrows indicated digit and E) is a blue to red color depth map; **F) to H)** Another track where are F), orthophoto, G) occlusion image with yellow arrow indicated Morphotype 1 track and H) blue to red color depth map; **I) and J)** Different views of another tracks. The green arrows in A), C), and F) point to the expulsion rims.

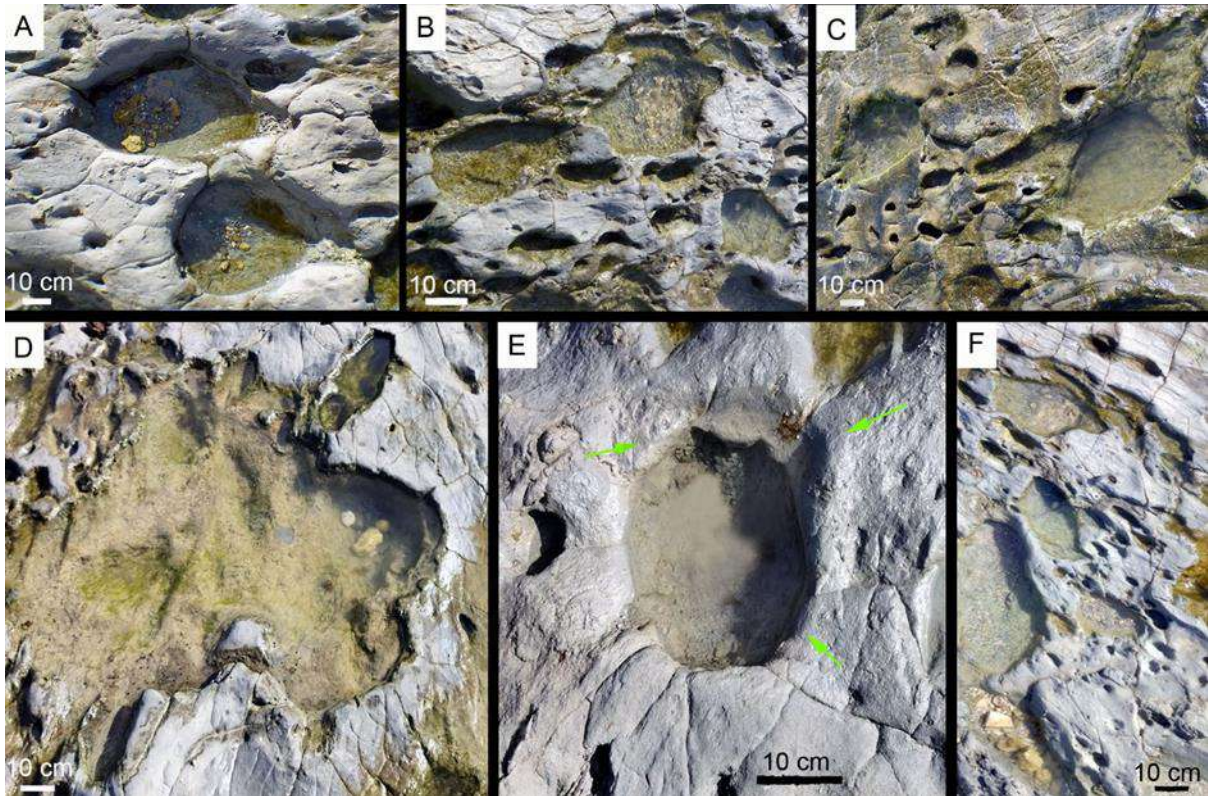


Fig. 8 Examples of Morphotype 4 tracks. **A), B) and C)** orthophotos of different pairs of tracks; **D)** View of at least, two amalgamated and eroded tracks; **E)** Isolated track; **F)** Different tracks and sizes. The green arrows in E point to the expulsion rims.

4.2 Orientation patterns

The tracks are restricted to one of the sections of the turbidite series and bounded by two micaceous sandstone ridges (Figs. 1–4). All tracks have a clear SW-NE orientation (Figs. 3–4) parallel to the protruding sandstone layers, which bound the tracksite (Figs. 1, 2, and 4). In some cases, well-defined tracks that show a particular polarity can be distinguished, with

tracks that can be oriented in opposite directions, back and forth. It is impossible to differentiate whether any general orientation is linked to a particular morphotype track, so it is deduced that they all occurred in the same direction and probably at successive moments, although probably, not necessarily at the same time.

5. Discussion

5.1 Track formation and preservation

In coastal rock exposures, pits and depressions can form from non-biological marine processes driven by tides and waves, which weather eroded, and shaped the rocks. (see Helm *et al.*, 2019). When resembling vertebrate tracks, these non-biological structures are referred to as pseudo-tracks (Panarello *et al.*, 2017, 2018). Fortunately, this site exhibits several features that indicate their biological origin, as true vertebrate tracks. On the one hand, many of them have very distinctive shapes that correlate with artiodactyl tracks (i.e., impressions of two parallel digits, elongated digits longer than they are wide, see Abbassi *et al.*, 2016). On the other hand, and most importantly, over 90 % of these tracks display a characteristic mud rim produced by an element exerting force on the substrate (Allen, 1997), thus ruling out a current erosive agent. Moreover, the aforementioned characteristics are repeated throughout the outcrop, leading us to consider that the depressions studied here are, with high probability, vertebrate tracks.

Four main factors influence the formation and preservation of vertebrate tracks: autopod anatomy, substrate features, limb dynamics and taphonomic modifications (see Falkingham, 2014 and references therein), excluding, the mass of the animal since the more significant the mass, the greater the weight and the greater the depth of the footprint. The shape of the four morphotypes in the Tarifa Island Beach tracksite is the result from the variation of these factors. For instance, morphotypes 1, 2 and 3 were produced by didactyl trackmakers of

different size, resulting in very similar correlation coefficients and length-frequency histograms (Figs. 9–10), whereas morphotype 4 trackmaker has large and rounded autopods. Moreover, no mud cracks have been found along the entire surface, so, it can be inferred that the sediment was sufficiently wet to prevent drying (see Schanz *et al.*, 2016). The tracks show associated expulsion rims implying that the sediment was cohesive and plastic when the trackmaker traversed it (Allen, 1997). On the other hand, the tracks have different depths. This variability may initially relate to the autopod shape—wide autopods penetrate less than narrow ones—and the type of substrate, where finer grain size and greater moisture produce deeper tracks (Allen, 1997; Manning, 2004; Jackson *et al.*, 2009, 2010; Falk *et al.*, 2017). The variations in track depth are randomly distributed both across the tracksite and within each morphotype. The depth range in M1 varies from 1 to 4 cm, in M2 from 0.5 to 6 cm, in M3 from 1.5 to 7 cm, and in M4 from 4 to 13 cm. Therefore, based on the absence of variations in grain size across the tracking surface (based on observations of hand samples in the field), it can be inferred that alterations in moisture content have occurred. These changes can happen simultaneously because the same substrate may behave differently based on specific characteristics, such as its proximity to areas that are more ponded or more depressed. These factors could lead to lateral variations in moisture within the substrate. Additionally, the tracks might have been created at different times, resulting in differences in moisture levels or water depth. Unfortunately, there are no clear cross-cutting relationships either between the tracks to help reconstruct the order of the events. Moisture influences track morphology, with well-preserved tracks (e.g., morphotype 1) typically forming in moist but not saturated substrates, which commonly lead to deeper, oval-shaped tracks with or without autopod drag marks (e.g., morphotypes 2 and 3) (e.g., Scrivner and Bottjer, 1986; Díaz-Martínez *et al.*, 2020; Abbasi *et al.*, 2021). This tracksite probably presents a brief preservational window (*sensu* Díaz-Martínez *et al.*, 2021) with a relatively short time between track formation and their burial due to the

absence of desiccation cracks and post-formational taphonomic signals (see Scrivner and Bottjer, 1986).

Despite the surface has a moderate degree of bioturbation, many of the tracks are isolated (morphotypes 1, 2 and 4). In any case, in some of them, the original shape of the track is modified by a subsequently imprinted track (morphotype 3). Overlapping can occur on the same tracking surface before burial or when younger tracks imprint over older tracks in underlying unconsolidated beds that deform the underlying levels (post-burial). Track interference can also occur between different trackways or within the same trackway (self-overlapping) (see Díaz-Martínez *et al.*, 2009 for further explanations). In this case, the overlapping is pre-burial. Although there is undoubtedly overlap due to the interference of different trackways, it is common to find pairs of tracks stacked very close, even with different degrees of overlap. Thus, it is possible to see a progressive transition between morphotype 2 with isolated and rounded tracks (Fig. 9A) to morphotype 3 with elongated tracks formed by the superposition of two tracks from the same type of animal (Fig. 9B). The transition between morphotypes 2 and 3 can be clarified through the concepts of 'overprinting' and 'underprinting,' which are phenomena observed in contemporary artiodactyls and perissodactyls, particularly in equids (Van den Heever *et al.*, 2017). These phenomena are linked to the speed of the trackmaker. Underprinting occurs when the manus track is laid down before the pes track, typically at slower gaits. At a normal walking pace, the pes track directly overlaps the manus track. As the gait accelerates, progressive overprinting takes place, with the pes track appearing ahead of the manus track. Therefore, it is likely that these footprints were created by trackmakers moving at varying speeds. This transition is also reflected in the scatter plots of morphotypes M1 to M3, especially in M2 and M3, which have almost the same correlation coefficient (r^2) of 0.7085 and 0.7127, respectively (Fig. 10 A–C). A similar trend is shown in the frequency histograms, especially between morphotypes M2 and M3 (Fig. 11 B–C).

In this sense, we hypothesize that changes in the dynamics of the trackmaker limbs mediate in their relative spatial position (see examples in Castanera *et al.*, 2012; D'Orazi Porchetti *et al.*, 2017; Razzolini and Klein, 2018), and, therefore, in its degree of overlap.

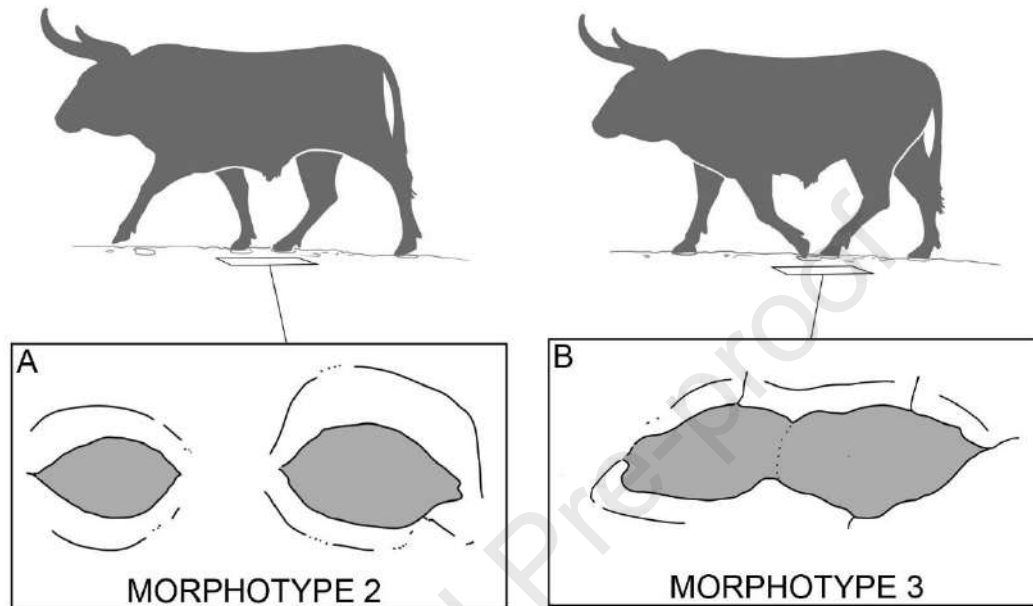


Fig. 9 Illustration showing the formation of tracks at the transition between Morphotypes 2 and 3. **A)** Isolated, subrounded to subovate tracks; **B)** Elongated track formed by the superposition of two consecutive tracks (manus and pes).

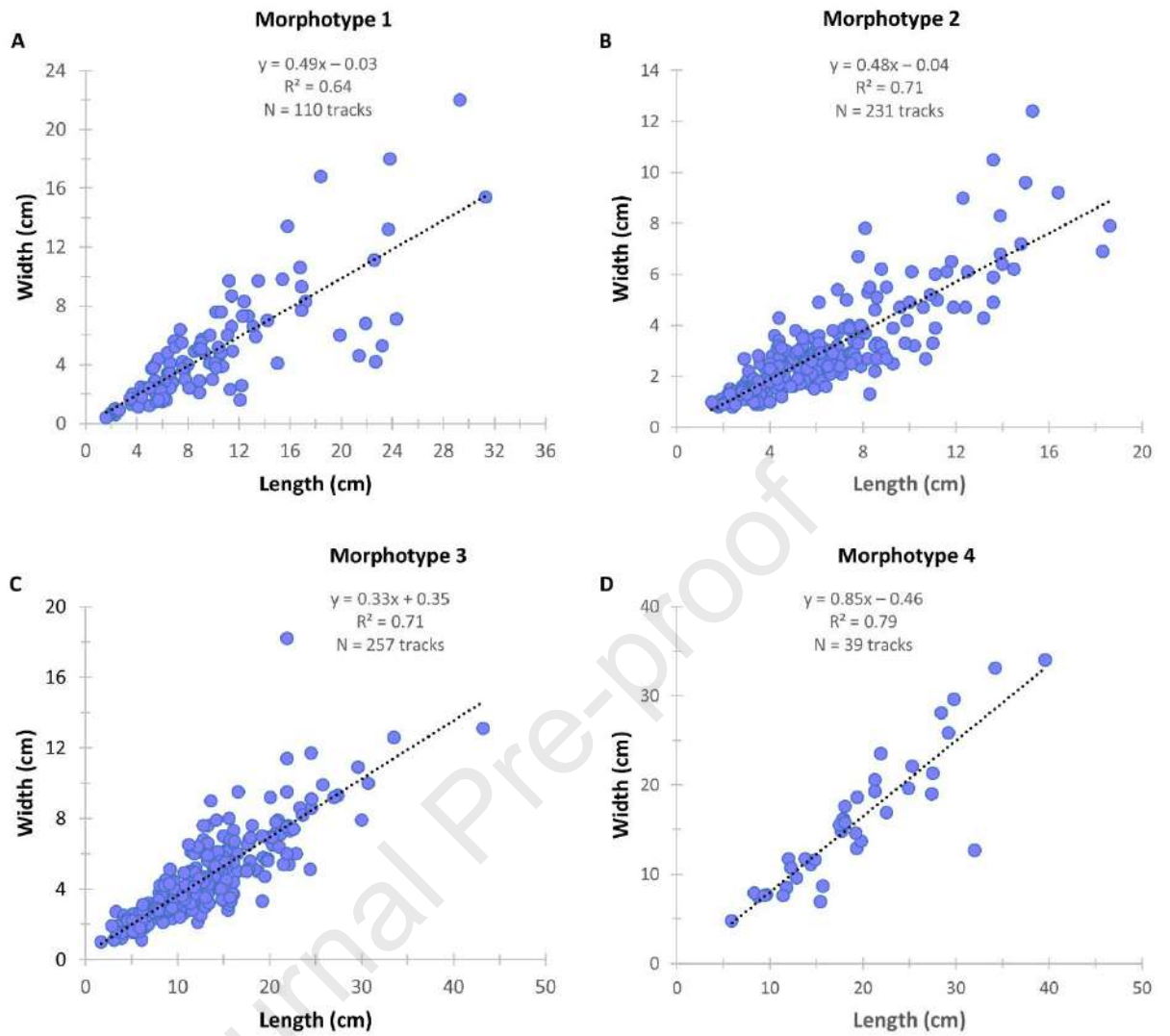


Fig. 10 Regression lines and correlation coefficients. **A)** Morphotype 1 (M1); **B)** Morphotype 2 (M2); **C)** Morphotype 3 (M3); **D)** Morphotype 4 (M4).

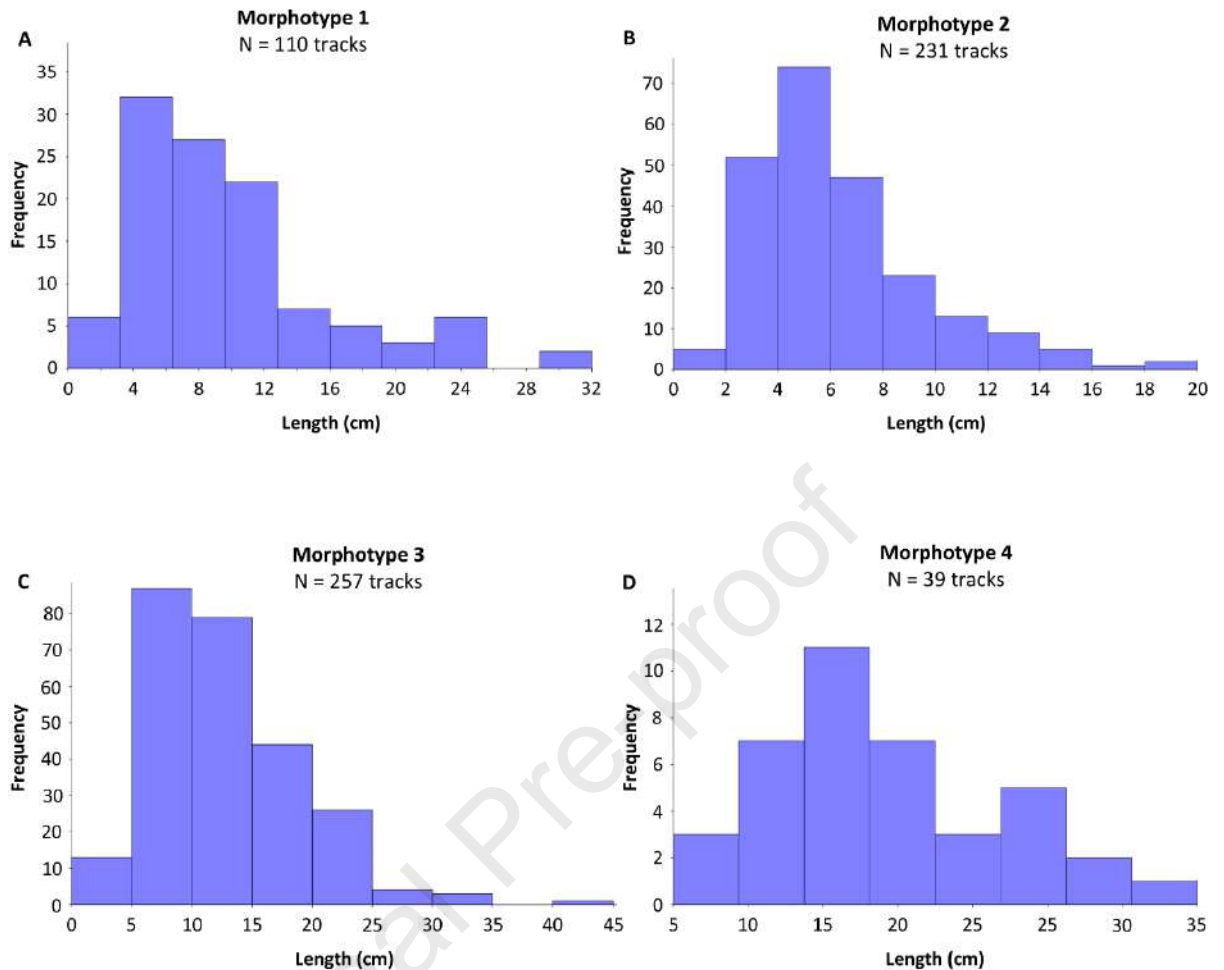


Fig. 11 Length-frequency histograms. **A)** Morphotype 1 (M1); **B)** Morphotype 2 (M2); **C)** Morphotype 3 (M3); **D)** Morphotype 4 (M4).

5.2 Ichnotaxonomy and trackmaker identity

The best-preserved tracks of morphotypes 1, 2, and 3 have didactyl impressions, which are traditionally related to artiodactyl trackmakers. Morphotype 1 with a preservation quality of 1–1.5 provides good information about the trackmaker and can be related to a previously defined ichnogenus. Morphotypes 2 and 3 present a preservation quality of 0–1, so they indicate only the presence of trackmakers in the area (*sensu* Marchetti *et al.*, 2019). Considering the morphological and size differences among these morphotypes, one might expect the tracks to have been left by different species of artiodactyls, but different individuals of the same

species could also impress tracks quite differently (see Díaz-Martínez *et al.*, 2020). It is uncertain whether the tracks were made by the same animals or at the same time. The morphotype 1 presents two-digit impressions separated throughout the tracks. This feature allows to differ between different ichnotaxa (e.g., *Entelodontipus* Casanovas-Cladellas and Santafe-Llopis, 1982 or *Cervipus* Matsukawa *et al.*, 2007 have separated digit imprints; *Bifidipes* Demathieu *et al.*, 1984 or *Lamaichnum* Aramayo and Manera de Bianco, 1987 present joined digit impressions). Nevertheless, the ichnotaxonomy of artiodactyl tracks is a complicated task because a very general morphology (i.e., didactyl track) is classified within more than 30 ichnotaxa (see Abbassi *et al.*, 2016). We prefer to classify these ichnites as indeterminate artiodactyl tracks, because they are not well preserved and it is sometimes very difficult to know the producer autopod anatomy. Nevertheless, the morphotype 1 tracks have similarities with the ichnogenus *Bovinichnus* Neto de Carvalho *et al.*, 2022 in the size and overall shape. This ichnogenus has been identified in other middle-upper Pleistocene tracksites of the Iberian Peninsula and is attributed to bovines (Neto de Carvalho *et al.*, 2022). The footprints also exhibit a notable similarity to those of giraffes described by Helm *et al.* (2018) from the Lower Pleistocene of South Africa. Giraffid remains have been reported in the Lower Pleistocene of the Iberian Peninsula (Van der Made and Morales, 2011). In this context, it is important to consider these animals as potential producers of the footprints, even though giraffid footprints have not been documented in the European Pleistocene. While it is highly probable that the tracks were made by multiple taxa, we cannot entirely dismiss the hypothesis that they were produced by individuals of varying sizes or ages within the same taxon.

In the Iberian Peninsula, the late Neogene–Pleistocene artiodactyl ichnological record is in its southern region. The upper Miocene- lower Pliocene beds of Sorbas present artiodactyl tracks, which were classified as *Pecoripeda (Gazellipeda) gazella* Vialov 1961 and related to gazelles (McCann *et al.*, 2018). The late Pliocene-early Pleistocene record is only composed

of the tracks studied herein, whereas the middle-late Pleistocene specimens were attributed to goats, cervids, wild boars and aurochs (see Neto de Carvalho *et al.*, 2003, 2020b, c, 2022). The middle Pleistocene tracks are located at the Matalascañas tracksite (age sensu Mayoral *et al.*, 2022). There, the suid ichnospecies *Suidichnus galani* Neto de Carvalho *et al.*, 2020c is described, and the ichnogenera *Bifidipes* and *Bovinichnus*, produced by cervids and aurochs respectively, are also identified. On the other hand, almost all the artiodactyl tracks from upper Pleistocene beds are classified within the ichnogenus *Bifidipes*. They were found in Pessegueiro, Fort of Ilha de Dentro, Aivados Beach and Gibraltar, and they were related to cervids and caprinae trackmakers (see Neto de Carvalho *et al.*, 2016; Muñiz *et al.*, 2019). Moreover, the auroch ichnospecies *Bovinichnus uripeda* is defined in the Trafalgar tracksite (Neto de Carvalho *et al.*, 2022).

Morphotype 4 is composed of subovate tracks of large size (19.1 cm average length). Although coastal erosion could modify its contour, the shape, the distribution and the presence of more tracks on the same surface coincide with what is expected from a track of a large vertebrate. Based on the shape and size, these tracks could be related to proboscideans (cf. Altamura and Serangeli, 2023). There are other records of this kind of track in the lower Pleistocene of the Iberian Peninsula. In the upper Miocene– lower Pliocene beds of Alicante, several mastodont tracks have been recognized (Fierro Bandera *et al.*, 2014?). The middle Pleistocene record has been identified in the Matalascañas tracksite (Neto de Carvalho *et al.*, 2020a), while the late Pleistocene tracks are located in Praia do Malhão, Praia da Ilha, Angra da Vaca and Gibraltar (Neto de Carvalho, 2009; Neto de Carvalho *et al.*, 2016, 2020a; Muñiz *et al.*, 2019). Almost all the above-cited proboscideans tracks have been related to the ichnogenus *Proboscipeda* Panin and Avram, 1962 (see Neto de Carvalho *et al.*, 2020a). Other similar tracks have been reported in the lower Pleistocene of Kenya, Japan and Arizona (Thrasher, 2007; Matsukawa and Shibata, 2015; Roach *et al.*, 2016). Unfortunately, the Tarifa

Island Beach tracks are poorly preserved, and we classified them preliminarily as undetermined proboscidean tracks.

The southern Iberian Peninsula is key for assessing the latest Pliocene-Pleistocene ichnodiversity in the Mediterranean region. While middle and upper Pleistocene tracks are well-represented, the Tarifa Island Beach site is the only known locality from the upper Pliocene–upper Pleistocene transition. Elsewhere in the Mediterranean, only two lower Pleistocene vertebrate track sites have been identified, both in Italy: one in Sardinia, featuring artiodactyl tracks attributed to *Bifidipes* aff. *B. aeolis* likely left by a small endemic bovid, and the other in Tuscany with proboscidean tracks (see Pillola *et al.*, 2020 and references therein).

5.3 When were the tracks formed?

The tracks are imprinted on the surface of a substrate that is tilted as a consequence of the last tectonic phases that occurred at the end of the Alpine orogeny during the late Miocene (Tortonian-Messinian). In this scenario, one possibility is that these tracks may have formed immediately after these tectonic phases during the Pliocene. However, during the early Pliocene, this part of the Cádiz coastline was submerged due to a transgression at the beginning of the Pliocene, and it was only during the late Pliocene that a generalized regression began along the entire coast. Nevertheless, at some points, the sea continued to occupy extensive gulfs, which generally coincide with the large valleys that can be seen today in the coastal area (Zazo and Goy, in González Lastra *et al.*, 1990). For this reason, and given that the vertebrate tracks are fossilized within the oyster conglomerates that form the late Pleistocene marine terrace (Figs. 1 and 2), the most plausible hypothesis is that the tracks were produced in the interval between the end of the late Pliocene regression and this last Quaternary transgression (Fig. 12).

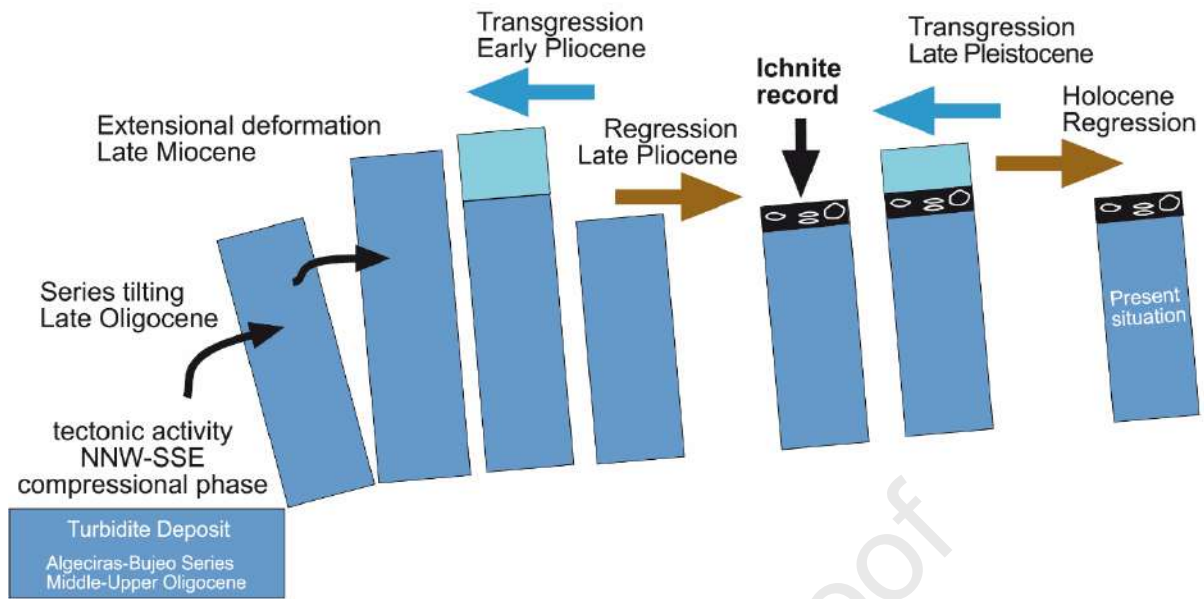


Fig. 12 Sketch illustrating the tectonic evolution of the substrate and the formation of ichnites during the transgressive and regressive pulses in late Neogene–Quaternary.

5.4 Pleistocene vertebrates modified Oligocene deposits

Regarding their particular preservation, the Tarifa Island Beach tracks are found on tilted Oligocene turbidites, although, as indicated earlier, they were imprinted between the late Pliocene and early Pleistocene. The tracks could not have been produced in the mudstone during the Oligocene because they were formed after these turbidites were folded in successive orogenic events. This is evident from the tracks' current position on the tracking surface, a horizontal surface in a mudstone that is perpendicular to their bedding plane.

In ichnology, it is quite common that a producer modifies a substrate older than the time of trace production. For example, in bioerosion traces, it is very frequent, as in the case of the boring structures of Cenozoic or Quaternary organisms on Mesozoic rocks that were ancient palaeocliffs (Martinell *et al.*, 2008; Santos *et al.*, 2008, 2010, 2015; Cachão *et al.*, 2009; Johnson *et al.*, 2011). In invertebrates' traces (Pemberton *et al.*, 1976), and some vertebrates

burrows (Smith, 1987; Doody *et al.*, 2015), the concept of tiering itself (substrate zoning in depth, Bromley, 1996), already implies a degree of penetration (e.g. current crabs that dig several meters in a much older substrate). However, in locomotion traces of vertebrates, except that the producers can modify several older layers when stepping, we have not found another similar example where tectonically deformed rocks were later weathered to the extreme to preserve millions of years younger tracks. In our case, the folding and subsequent erosion of the turbidites resulted in the formation of mudstone corridors bounded by sandstone ridges. These corridors would have remained totally or partially flooded and, due to their fine grain size, would have constituted soft substrates on which the tracks were imprinted, in some cases even reaching several centimetres in depth.

5.5 Palaeogeographical implications

On the coast of the Gulf of Cádiz, there is only one palaeogeographic reconstruction for the Bay of Cádiz (Gutiérrez Mas *et al.*, 1991), located about 80 km NW of the study area. This reconstruction ranges from the early Pliocene to the early Quaternary. However, the Tarifa sector is not represented and the configuration of the coast is practically the same as it is today. For this reason, the existence of this tracksite is of great interest, as it can provide relevant additional data for understanding the configuration of the coast in this sector and its relationship with the known reliefs of the nearby mountain ranges.

In the vicinity of the Tarifa area, only two levels of old hanging glacis are known, which drained to the SW during the early Pleistocene (Gracia *et al.*, 2004). The upper glacis is of lower Pleistocene age (Rose and Rosenbaum, 1991) and is located at an elevation of +50-60 m, while the lower one is located at +19.5 m and would connect with the marine terrace of Isla de las Palomas and Tarifa.

In comparison, in the southern part of the Sierra de Enmedio, some 12 km northwest of Tarifa, another glaciais of similar elevation has been identified (Gracia *et al.*, 2004).

Collectively, this evidence seems to indicate that there must have been a direct relationship between the sectors attached to the foot of the higher reliefs (hills) and their more distal areas towards the coast. These distal areas were likely broad coastal plains, where mudstone-floored, sandstone-walled, and partially waterlogged corridors preserved the passage of vertebrates in different directions. (Fig. 13).



Fig. 13 Reconstruction of artiodactyl and proboscidean migration through the Oligocene corridor on a coastal plain that would link up with the glaciais deposits of the nearby mountain ranges. Drawing by Adri Blázquez Riola.

This coastal configuration could have preceded other coastal plains identified in the Gulf of Cádiz. In the Chipiona sector, about 100 km NW, Rodríguez-Ramírez *et al.* (2024) defined an extensive late Pleistocene coastal plain corresponding to the high Marine isotope stage (MIS) 5e2). Moreover, in the same gulf, but on the coast of Huelva (Doñana sector), Zazo

et al. (1999; 2005) and Roquero *et al.* (2013) also recognized a coastal plain of the same chronology (MIS5), while Mayoral *et al.* (2022) assigned it to the transition between MIS9 and MIS8 (mid-Pleistocene).

In short, this deposit suggests that the coastal plains in the Gulf of Cádiz may have formed since the beginning of the Pleistocene, with the oldest records in the Tarifa area and the newest in Cádiz and Huelva. Additionally, this ichnological record is unique, representing the only evidence of ?artiodactyls and ?proboscideans during a period with no other palaeontological records from the region.

The track preservation quality is not particularly remarkable, which is typical for most tracks globally. This is the case of morphotypes M3 and M4, which have Marchetti grades between 0 and 1, but this does not diminish the importance of their discovery, because their presence is a significant heritage and holds great palaeobiological and palaeo-biogeographical significance.

6 Conclusions

The southern part of the Iberian Peninsula has a rich collection of vertebrate footprints from the late Neogene to Quaternary. While some time periods, like the transition from the Miocene to Pliocene and the middle to late Pleistocene, are well documented, others are still not fully understood. This paper highlights the discovery of the southernmost tracksite in both the Iberian Peninsula and continental Europe, located on the Island of Tarifa in Cádiz (Spain).

This tracksite features over 600 vertebrate footprints from the early Pleistocene, categorized into four different types. The first three morphotypes (M1 to M3) are mainly didactyl in shape, ranging from rounded to oval and elongated, and are linked to tracks made by artiodactyls. The fourth morphotype, which is larger and has a suboval to subcircular shape, is likely associated with footprints from proboscideans.

We also observed a gradual change from Morphotype 2, which has isolated rounded footprints, to Morphotype 3, characterized by elongated tracks created by overlapping footprints from the same animal. The type of ground and the movement of the animals' limbs influenced the final shape of the tracks. These footprints were made in a soft, clay-rich substrate from the late Oligocene, which was later folded and tilted during the late Pliocene. This unique landscape created a narrow corridor that was constantly flooded, allowing the animals to move through it in different directions.

This finding from the southernmost point of continental Europe represents the first early Pleistocene discovery in the Iberian Peninsula and is a rare example from the Mediterranean region.

Authors' contributions

EM; ARR; RDD; EBS; EGV: Fieldwork and sampling. EM; ID-M; JD; AS: conceptualization, investigation, methodology, formal analysis, writing-original draft. EM; ID-M: editing. EM; ARR; EBS; EGV; JAM; MJM; MA; ID-M: writing-review. MJM; MA: funding acquisition. All authors read and approved the final manuscript.

Funding

This work was supported by the R+D+i Project PCM-00096, the Project PID2019-104625RB-100, funded by MCIN/AEI/ 10.13039/501100011033, and the grants to the Research Group RNM276 (Junta de Andalucía), and the CCTH from University of Huelva.

Conflicts of interest

We hereby state that we do not have any financial or personal connections with individuals or organizations that could unduly influence our work. Additionally, we confirm that we have no professional or personal interest, of any kind, in any product, service or company that could potentially affect the impartiality of the position presented in this article or its review.

References

- Abbassi, N., Kundrát, M., Mirzaie Ataabadi, M., Ahlberg, P.E., 2016. Avian ichnia and other vertebrate trace fossils from the Neogene Red Beds of Tarom valley in north-western Iran. *Historical Biology*, 28(8), 1075-1089.
<https://doi.org/10.1080/08912963.2015.1104306>.
- Allen, J.R., 1997. Subfossil mammalian tracks (Flandrian) in the Severn Estuary, SW Britain: mechanics of formation, preservation and distribution. *Philosophical Transactions of the Royal Society of London. Series B: Biological Sciences*, 352(1352), 481-518.
<https://doi.org/10.1098/rstb.1997.0035>.
- Altamura, F., Serangeli, J., 2023. A tale of many tracks: An overview of fossil proboscidean footprints at Paleolithic sites around the world, with a particular focus on Schöningen, in Germany. *Journal of Mediterranean Earth Sciences*, 15, 333-354.
- Aramayo, S.A., Manera de Bianco, T., 1987. Hallazgo de una icnofauna continental (Pleistoceno tardío) en la localidad de Pehuen-Có, Provincia de Buenos Aires, Argentina. Parte I: Edentata, Litopterna, Proboscidea. Parte II: Carnivora, Artiodactyla y Aves. *4 Congreso Latinoamericano de Paleontología (Santa Cruz de la Sierra, Bolivia)*. Actas, Santa Cruz de la Sierra, Bolivia, 1, 516-531.
- Bromley, R.G., 1996. *Trace Fossils. Biology, Taphonomy and Applications*. Springer-Science+Business Media, B.V., p. 361.
- Cachão, M., da Silva, C., Santos, A., Domènech, R., Martinell, J., Mayoral, E., 2009. The bioeroded megasurface of Oura (Algarve, south Portugal): implications for the Neogene stratigraphy and tectonic evolution of southwest Iberia. *Facies*, 55, 213-225.
<https://doi.org/10.1007/s10347-008-0172-2>.

- Casanovas-Cladellas, M.L., Santafé-Llopis, J.V., 1982. Icnofauna oligocena de Agramunt (Lerida, Espana). *Acta Geològica Hispànica*, 17(1-2), 113-119.
- Castanera, D., Pascual, C., Canudo, J.I., Hernandez, N., Barco, J.L., 2012. Ethological variations in gauge in sauropod trackways from the Berriasian of Spain. *Lethaia*, 45(4), 476-489. <https://doi.org/10.1111/j.1502-3931.2012.00304.x>.
- Demathieu, G.R., Ginsburg, L., Guerin, C., Truc, G., 1984. Etude paléontologique, ichnologique et paléocologique du gisement Oligocène de Saignon (Bassin d'Apt. Valcluse). *Bulletin Musée National d'Histoire Naturelle*, Paris, 6, 153183.
- Díaz-Martínez, I., Cónsole-Gonella, C., Citton, P., de Valais, S., 2021. Half a century after the first footprint on the lunar surface: The ichnological side of the Moon. *Earth-Science Reviews*, 212, 103452. <https://doi.org/10.1016/j.earscirev.2020.103452>.
- Díaz-Martínez, I., Pérez-Lorente, F., Canudo, J.I., Pereda-Suberbiola, X., 2009. Causas de la variabilidad en icnitas de dinosaurios y su aplicación en icnotaxonomía. *Actas de las IV Jornadas Internacionales sobre Paleontología de Dinosaurios y su Entorno*. Salas de los Infantes, Burgos, pp. 207-220.
- Díaz-Martínez, I., Suarez-Hernando, O., Larrasoña, J.C., Martínez-García, B.M., Baceta, J. I., Murelaga, X., 2020. Multi-aged social behaviour based on artiodactyl tracks in an early Miocene palustrine wetland (Ebro Basin, Spain). *Scientific Reports*, 10(1), 1099. <https://doi.org/10.1038/s41598-020-57438-4>.
- Doody, J.S., James, H., Colyvas, K., Mchenry, C.R., Clulow, S., 2015. Deep nesting in a lizard, déjà vu devil's corkscrews: first helical reptile burrow and deepest vertebrate nest. *Biological Journal of the Linnean Society*, 116, 13–26. <https://doi.org/10.1111/bij.12589>.
- D'Orazi Porchetti, S., Bertini, R.J., Langer, M.C., 2017. Walking, running, hopping: analysis of gait variability and locomotor skills in *Brasilichnium elusivum* Leonardi, with

- inferences on trackmaker identification. *Palaeogeography, Palaeoclimatology, Palaeoecology*, 465, 14-29. <https://doi.org/10.1016/j.palaeo.2016.10.009>.
- Doyle, P., Wood, J.L., George, G.T., 2000. The shorebird ichnofacies: an example from the Miocene of southern Spain. *Geological Magazine*, 137(5), 517-536. <https://doi.org/10.1017/S0016756800004490>.
- Falk, A.R., Hasiotis, S.T., Gong, E., Lim, J.D., Brewer, E.D., 2017. A new experimental setup for studying avian neoichnology and the effects of grain size and moisture content on tracks: trials using the domestic chicken (*Gallus gallus*). *Palaios*, 32(11), 689-707. <https://doi.org/10.2110/palo.2017.022>.
- Falkingham, P.L., 2014. Interpreting ecology and behaviour from the vertebrate fossil track record. *Journal of Zoology*, 292(4), 222-228. <https://doi.org/10.1111/jzo.12110>.
- Falkingham, P.L., Bates, K.T., Avanzini, M., Bennett, M., Bordy, E.M., Breithaupt, B.H., Castanera, D., Citton, P., Díaz-Martínez, I., Farlow, J.O., Fiorillo, A.R., Gatesy, S.M., Getty, P., Hatala, K.G., Hornung, J.J., Hyatt, J.A., Klein, H., Lallensack, J.N., Martin, A.J., Marty, D., Matthews, N.A., Meyer, Ch.A., Milàn, J., Minter, N.J., Razzolini, N.L., Romilio, A., Salisbury, S.W., Sciscio, L., Tanaka, I., Wiseman, A.L., Xing, L.D., Belvedere, M et al ., 2018. A standard protocol for documenting modern and fossil ichnological data. *Palaeontology*, 61(4), 469-480. <https://doi.org/10.1111/pala.12373>.
- Fierro Bandera, I., Aberasturi Rodríguez, A., Corbí Sevilla, H., Marín Ferrer, J.M., Estévez Rubio, A., Lancis Sáez, C., Soria, J.M., Rosser Limiñana, P., 2014. Resultados de la primera excavación sistemática en el yacimiento de icnitas “El Porquet 1”, Mioceno superior – Plioceno, Alicante (España). In: Royo-Torres, R. Verdú F.J. Alcalá. L. (Coords.), XXX Jornadas de Paleontología de la Sociedad Española de Paleontología.

- Fundación Conjunto Paleontológico de Teruel – Dinópolis. *¡Fundamental!*, 24, 107-109.
- Fornós, J.J., Bromley, R.G., Clemmensen, L.B., Rodríguez-Perea, A., 2002. Tracks and trackways of *Myotragus balearicus* Bate (Artiodactyla, Caprinae) in Pleistocene aeolianites from Mallorca (Balearic Islands, Western Mediterranean). *Palaeogeography, Palaeoclimatology, Palaeoecology*, 180(4), 277-313.
[https://doi.org/10.1016/S0031-0182\(01\)00431-X](https://doi.org/10.1016/S0031-0182(01)00431-X).
- González Lastra, J., García de Domingo, A., Hernaiz Huerta, P.P., Zazo, C., Goy, J.L., 1990. Cartografía y Memoria de la Hoja nº 1077 Tarifa, Mapa Geológico de España, Instituto Tecnológico Geominero de España, Madrid, E: 1: 50.000, p. 41.
- Gracia, F.J., Alonso, C., Martínez del Pozo, J.A., Del Río, L., Anfuso, G., Benavente, J., 2004. Evolución geomorfológica holocena e histórica de la Ensenada de Los Lances (Tarifa, Cádiz). In: Blanco Chao, R. López Bedoya, J. Pérez Alberti, A. (Eds.), *Procesos geomorfológicos y evolución costera. Actas de la II Reunión de Geomorfología Litoral*, Santiago de Compostela, 2003, pp. 255-269.
- Gutiérrez Mas, J.M., Martín Algarra, A., Domínguez Bella, S., Moral Cardona, J.P. 1991. *Introducción a la Geología de la provincia de Cádiz*. Servicio de Publicaciones, Universidad de Cádiz, p. 316.
- Helm, C., Cawthra, H., Cowling, R., De Vynck, J., Marean, C., McCrea, R., Rust, R., 2018. Palaeoecology of giraffe tracks in Late Pleistocene aeolianites on the Cape south coast. *South African Journal of Science*, 114 (1-2), 1-8.
<https://doi.org/10.17159/sajs.2018/20170266>.
- Helm, C.W., Lockley, M.G., Cole, K., Noakes, T.D., McCrea, R.T., 2019. Hominin tracks in southern Africa: A review and an approach to identification. *Palaeontologia Africana*, 53, 81-96.

- Jackson, S.J., Whyte, M.A., Romano, M., 2009. Laboratory-controlled simulations of dinosaur footprints in sand: a key to understanding vertebrate track formation and preservation. *Palaios*, 24(4), 222-238. <https://doi.org/10.2110/palo.2007.p07-070r>.
- Jackson, S.J., Whyte, M.A., Romano, M., 2010. Range of experimental dinosaur (*Hypsilophodon foxii*) footprints due to variation in sand consistency: how wet was the track?. *Ichnos*, 17(3), 197-214. <https://doi.org/10.1080/10420940.2010.510026>.
- Johnson, M.E., Baarli, B.G., Santos, A., Mayoral, E., 2011. Ichnofacies and microbial build-ups on Late Miocene rocky shores from Menorca (Balearic Islands), Spain. *Facies*, 57, 255-265. <https://doi.org/10.1007/s10347-010-0240-2>.
- Lancis, C., Estévez, A., 1992. Las icnitas de mamíferos del sur de Alicante (España). *Geogaceta*, 12, 60-64.
- Lario, J., 1996. Último y presente interglaciar en el área de conexión Atlántico-Mediterráneo (Sur de España). Variaciones del nivel del mar, paleoclima y paleoambientes. PhD thesis, Universidad Complutense de Madrid.
- Lockley, M.G., 1991. *Tracking Dinosaurs: A New Look at An Ancient World*. Cambridge University Press, Cambridge, p. 238.
- Lockley, M., Conrad, K., 1989. The paleoenvironmental context, preservation and paleoecological significance of dinosaur tracksites in the western USA. In: Gillette, D.D., Lockley, M.G. (Eds.), *Dinosaur Tracks and Traces*. New York: Cambridge University Press, pp. 121–134.
- Mallison, H., Wings, O., 2014. Photogrammetry in paleontology—a practical guide. *Journal of Paleontological Techniques*, 12,1-31.
- Manning, P.L., 2004. A new approach to the analysis and interpretation of tracks: examples from the dinosauria. *Geological Society, London, Special Publications*, 228(1), 93-123. <https://doi.org/10.1144/GSL.SP.2004.228.01.06>.

- Marchetti, L., Belvedere, M., Voigt, S., Klein, H., Castanera, D., Díaz-Martínez, I., Marty, D., Xing, L., Feola, S., Melchor, R.N., Farlow, J.O., 2019. Defining the morphological quality of fossil footprints. Problems and principles of preservation in tetrapod ichnology with examples from the Palaeozoic to the present. *Earth-Science Reviews*, 193, 109-145. <https://doi.org/10.1016/j.earscirev.2019.04.008>.
- Martinell, J., Domènech, R., Mayoral, E., Santos, A., 2008. Geodynamic and paleogeographic implications of a Pliocene bioerosive episode in El Canuto de la Utrera (Casares, Betic Cordillera, S Spain).. *6th International Bioerosion Workshop, Salt Lake City, Utah (USA), Program and Abstracts*, p. 28.
- Martini, E., 1971. Standard Tertiary and Quaternary Calcareous Nannoplankton Zonation. *Proceedings of the 2nd Planktonic Conference, Roma, 1970*, 739-785.
- Matsukawa, M., Shibata, K., 2015. Review of Japanese Cenozoic (Miocene– Modern) vertebrate tracks. *Ichnos*, 22, 261–290. <https://doi.org/10.1080/10420940.2015.1064407>.
- Matsukawa, M., Baba, K., Lockley, M.G., 2007. A mammalian ichnofauna from Pliocene Pleistocene terrestrial deposits of West Tokyo, Japan. *New Mexico Museum of Natural History and Science*, 42, 185-199.
- Mayoral, E., Díaz-Martínez, I., Duveau, J., Santos, A., Ramírez, A. R., Morales, J. A., Morales, L.A., Díaz-Delgado, R., 2021. Tracking late Pleistocene Neandertals on the Iberian coast. *Scientific Reports*, 11(1), 4103. <https://doi.org/10.1038/s41598-021-83413-8>.
- Mayoral, E., Duveau, J., Santos, A., Ramírez, A. A., Morales, J.J., Díaz-Delgado, R., Rivera-Silva, J., Gómez-Olivencia, A., Díaz-Martínez, I., 2022. New dating of the Matalascañas footprints provides new evidence of the Middle Pleistocene (MIS 9-8) hominin paleoecology in southern Europe. *Scientific Reports*, 12(1), 17505.

- McCann, T., Amaru, I., Drews, E.L., Gunatilake, T., Knauf, C.J., Rick, F., Roohnikan, D., Schaumann, R.M., Tillmann, S., 2018. The hunter and the hunted—first description of a jackal-like predator and associated bird and gazelle tracks from the Post-Messinian of the Sorbas Basin, SE Spain. *Zeitschrift der Deutschen Gesellschaft für Geowissenschaften (ZDGG)*, 169(1). <https://doi.org/10.1127/zdgg/2018/0131>.
- Muñiz, F., Cáceres, L.M., Rodríguez-Vidal, J., Neto de Carvalho, C., Belo, J., Finlayson, C., Finlayson, G., Finlayson, S., Izquierdo, T., Abad, M., Jiménez-Espejo, F. J., Sugisaki, S., Gómez, P., Ruiz, F., 2019. Following the last Neanderthals: Mammal tracks in late Pleistocene coastal dunes of Gibraltar (S Iberian Peninsula). *Quaternary Science Reviews*, 217, 297-309. <https://doi.org/10.1016/j.quascirev.2019.01.013>.
- Neto de Carvalho, C., 2009. Vertebrate tracksites from the Mid-Late Pleistocene eolianites of Portugal: the first record of elephant tracks in Europe. *Geological Quarterly*, 53(4), 407-414.
- Neto de Carvalho, C., Belo, J., 2022. Bear-claw deep tracks in the Pleistocene at north of Praia do Cavalo, Odemira (Portugal). *Ciências da Terra*, 20(1), 21-25. <https://doi.org/10.21695/cterra/esj.v20i1.436>.
- Neto de Carvalho, C., Figueiredo, S., Belo, J., 2016. Vertebrate tracks and trackways from the pleistocene eolianites of SW Portugal. *Comunicações Geológicas*, 103.
- Neto de Carvalho, C.N., Figueiredo, S., Muñiz, F., Belo, J., Cunha, P. P., Baucon, A., Cáceres, L. M., Rodríguez-Vidal, J., 2020a. Tracking the last elephants in Europe during the Würm Peniglacial: the importance of the Late Pleistocene aeolianite record in SW Iberia. *Ichnos*, 27(3), 352-360. <https://doi.org/10.1080/10420940.2020.1744586>.
- Neto de Carvalho, C., Muñiz, F., Galán, J.M., Rodríguez-Vidal, J., Gómez, P., Toscano, A., Ruiz, F., Belo, J., Belaústegui, Z., Cáceres, L. M., Finlayson, G., Finlayson, S., Giles

Guzamán, F., Finlayson, C., 2020b. First vertebrate tracks and palaeoenvironment in a MIS-5 context in the Doñana National Park (Huelva, SW Spain). *Quaternary Science Reviews*, 243, 106508. <https://doi.org/10.1016/j.quascirev.2020.106508>.

Neto de Carvalho, C. N., Muñiz, F., Belaústegui, Z., Belo, J., Gómez, P., Toscano, A., Cachão, M., Cunha, P.P., Ruiz, F., Cáceres, L.M., Rodriguez-Vidal, J., Finlayson, G., Finlayson, S., Guzman, F.G., Finlayson, C., 2020c. Paleocological implications of large-sized wild boar tracks recorded during the Last Interglacial (MIS 5) at Huelva (SW Spain). *Palaios*, 35(12), 512-523. <https://doi.org/10.2110/palo.2020.058>.

Neto de Carvalho, C.N., Muñiz, F., Cáceres, L. M., Belaústegui, Z., Rodríguez-Vidal, J., Belo, J., Moreira, N., Cachão, M., Cunha, P., Figueiredo, S., Galán, J.M., Zhang, Y., a Gómez, P., Toscano, A., Ruiz, F., Ramírez-Cruzado, S., Giles-Guzmán, F., Finlayson, G., Finlayson, S., Finlayson, C., 2022. Aurochs roamed along the SW coast of Andalusia (Spain) during Late Pleistocene. *Scientific Reports*, 12(1), 9911. <https://doi.org/10.1038/s41598-022-14137-6>.

Neto de Carvalho, C., Muñiz, F., Cáceres, L.M., Rodríguez-Vidal, J., Medialdea, A., del Val, M., Cunha, P.P., García, J.M., Giles-Guzmán, F., Carrión, J.S., Belaústegui, Z., Toscano, A., Gómez, P., Galán, J.M., Belo, J., Cachão, M., Ruiz, F., Ramirez-Cruzado, S., Finlayson, G., Finlayson, S., Finlayson, C., 2023. Neanderthal footprints in the “Matalascañas trampled surface” (SW Spain): new OSL dating and Mousterian lithic industry. *Quaternary Science Reviews*, 313, 108200. <http://creativecommons.org/licenses/by/4.0/>.

Neto de Carvalho, C., Saltão, S., Ramos, J.C., Cachão, M., 2003. Pegadas de *Cervus elaphus* nos eolianitos pliocénicos da ilha do Pessegueiro (SW Alentejano, Portugal). *Ciências da Terra*, 5, 36–40.

- Panarello, A., Santello, L., Belvedere, M., Mietto, P., 2017. Anthropic artifacts and donkey horseshoe traces looking like fossil human footprints: a case study from the Roccamonfina volcano (central Italy) with implication for human ichnology. *Bollettino della Società Paleontologica Italiana*, 56(2), 278.
- Panarello, A., Santello, L., Belvedere, M., Mietto, P., 2018. Is it human? Discriminating between real tracks and track-like structures. *Ichnos*, 25(1), 66-75.
<https://doi.org/10.1080/10420940.2017.1337010>.
- Panin, N., Avram, E., 1962. Noi urme de vertebrate in Miocenul Subcarpatilor Rominesi. *Studii si Cercetari de Geologie*, 7, 455-484.
- Pemberton, G.S., Risk, M.J., Buckley, D.E., 1976. Supershrimp: Deep Bioturbation in the Strait of Canso, Nova Scotia. *Science*, 192, 790-791.
<https://doi.org/10.1126/science.192.4241.790>.
- Pillola, G.I.A.N., Palombo, M.R., Adolfo, P., Zoboli, D., 2020. The Pleistocene non-hominid vertebrate ichnofossil record of Italy. *Journal of Mediterranean Earth Sciences*, 12, 193-212.
- Razzolini, N.L., Klein, H., 2018. Crossing slopes: unusual trackways of recent birds and implications for tetrapod footprint preservation. *Ichnos*, 25(2-3), 252-259.
<https://doi.org/10.1080/10420940.2017.1337634>.
- Roach, N.T., Hatala, K.T., Ostrofsky, K.R., Villmoare, B., Reeves, J.S., Du, A., Braun, D.R., Harris, J.W.K., Behrensmeyer, A.K., Richmond, B.G., 2016. Pleistocene footprints show intensive use of lake margin habitats by *Homo erectus* groups. *Scientific Reports* 6, 26374. <https://doi.org/10.1038/srep26374>.
- Rodríguez-Ramírez, A., Gracia, F.J., Morales, J.A., García, D., Mayoral, E., 2024. A Late Pleistocene coastal plain pertaining to MIS 5 in the Gulf of Cádiz (mouth of the

- Guadalquivir River, SW Iberia). *Geomorphology*, 452, 109096.
<https://doi.org/10.1016/j.geomorph.2024.109096>.
- Roquero, E., Silva, P.G., Zazo, C., Goy, J.L., Dabrio, C.J., Borja, F., 2013. Micromorphology of hydromorphic soils developed in fluvio-marine sediments during the Middle-Late Pleistocene transit in the Gulf of Cadiz (Atlantic South Spain). *Spanish Journal of Soil Science*, 3(3), 184-200. <https://doi.org/10.3232/SJSS.2013.V3.N3.04>.
- Rose, E.P.F., Rosenbaum, M.S., 1991. *A field guide to the Geology of Gibraltar*. The Gibraltar Museum, pp. 192.
- Santos, A., Mayoral, E., da Silva, C., Cachão, M., Domènech, R., Martinell, J., 2008. Trace fossil assemblages on Miocene rocky shores of southern Iberia. In: Wisshak, M.T., Tapanila, L. (Eds.), *Current Developments in Bioerosion*. Berlin, Heidelberg, New York, Springer, pp. 431-450. https://doi.org/10.1007/978-3-540-77598-0_22.
- Santos, A., Mayoral, E., da Silva, C.M., Cachão, M., Kullberg, J.C., 2010. *Trypanites* ichnofacies: Palaeoenvironmental and tectonic implications. A case study from the Miocene disconformity at Foz da Fonte (Lower Tagus Basin, Portugal). *Palaeogeography, Palaeoclimatology, Palaeoecology*, 292, 35-43.
<https://doi.org/10.1016/j.palaeo.2010.03.023>.
- Santos, A., Mayoral, E., Dumont, C.P., da Silva, C.M., Ávila, S.P., Baarli, G., Cachão, M., Johnson, M.E., Ramalho, R.S., 2015. Role of environmental change in rock-boring echinoid trace fossils. *Palaeogeography, Palaeoclimatology, Palaeoecology*, 432, 1-14. <https://doi.org/10.1016/j.palaeo.2015.04.029>.
- Schanz, T., Datcheva, M., Haase, H., Marty, D., 2016. Analysis of Desiccation Crack Patterns for Quantitative Interpretation of Fossil Tracks. In: Falkingham, P.L., Marty, D., Richter, A. (Eds.), *Dinosaur Tracks: The Next Steps, Life of the Past*, Chapter: 19, Indiana University Press, pp. 367-379.

- Scrivner, P.J., Bottjer, D.J., 1986. Neogene avian and mammalian tracks from Death Valley National Monument, California: their context, classification and preservation. *Palaeogeography, Palaeoclimatology, Palaeoecology*, 57(2-4), 285-331. [https://doi.org/10.1016/0031-0182\(86\)90017-9](https://doi.org/10.1016/0031-0182(86)90017-9).
- Smith, R.M.H., 1987. Helical burrows casts of Therapsid origin from the Beaufort Group (Permian) of South Africa. *Palaeogeography, Palaeoclimatology, Palaeoecology*, 80, 155-170. [https://doi.org/10.1016/0031-0182\(87\)90030-7](https://doi.org/10.1016/0031-0182(87)90030-7).
- Thrasher, L., 2007. Fossil tracks and trackways from the Bowie Zeolite Mines, Graham County, Arizona. In: Lucas, S.G., Spielmann and Lockley, M.G. (Eds.), *Cenozoic Vertebrate Tracks and Traces. New Mexico Museum of Natural History and Sciences Bulletin*, 42, 269-273.
- Van den Heever, A., Mhlongo, R., Benadie, K., 2017. Tracker Manual – a Practical Guide to Animal Tracking in Southern Africa. Struik Nature, Cape Town.
- Van der Made, J., Morales, J., 2011. *Mitilanotherium inexpectatum* (Giraffidae, Mammalia) from Huélago (Lower Pleistocene; Guadix-Baza basin, Granada, Spain)-observations on a peculiar biogeographic pattern. *Estudios Geológicos*, 67(2), 613-627.
- Vialov, O.S., 1961. Paleogenovoy flish svernogo skloma karpát. *Akademii Nauk Ukrainskoj SSR*, pp. 219.
- Zazo, C., Silva, P.G., Goy, J.L., Hillaire-Marcel, C., Ghaleb, B., Lario, J., Bardají, T., González, A., 1999. Coastal uplift in continental collision plate boundaries: data from the Last Interglacial marine terraces of the Gibraltar Strait area (south Spain). *Tectonophysics*, 301, 95–109. [https://doi.org/10.1016/S0040-1951\(98\)00217-0](https://doi.org/10.1016/S0040-1951(98)00217-0).
- Zazo, C., Mercier, N., Silva, P. G., Dabrio, C. J., Goy, J. L., Roquero, E., Soler, V., Borja, F., Lario, J., Polo, D., Luque, L., 2005. Landscape evolution and geodynamic controls in

the Gulf of Cadiz (Huelva coast, SW Spain) during the Late Quaternary.

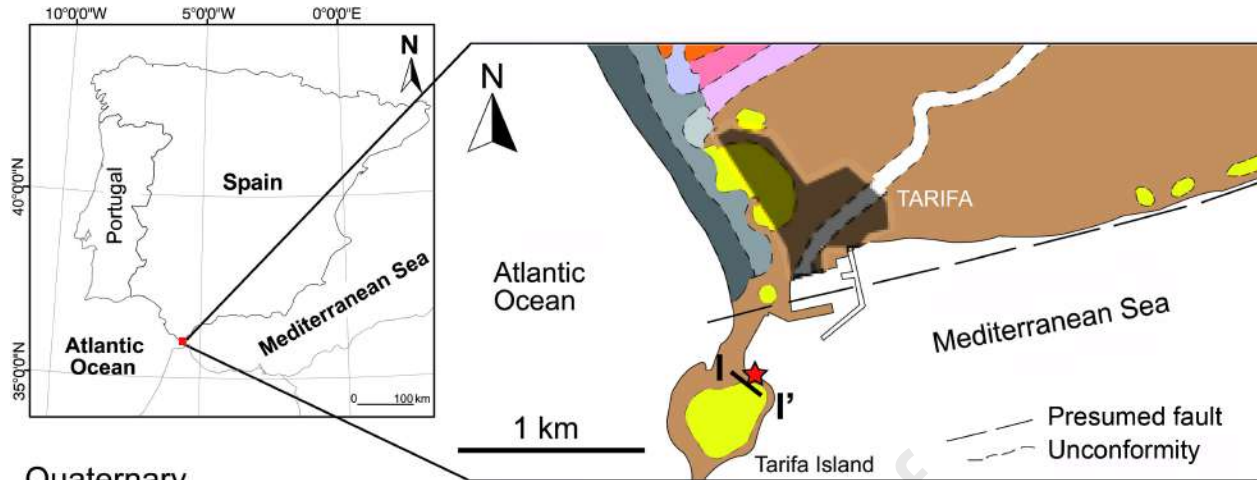
Geomorphology, 68, 269–290. <https://doi.org/10.1016/j.geomorph.2004.11.022>.

Caption to Table

Table 1. Dimensional parameters and percentage of morphotypes. All values in cm.

Journal Pre-proof

Morphotype	Number of tracks	Percentage	Length (cm)			Width (cm)		
			Min.	Max.	Mean	Min.	Max.	Mean
M1	110	17 %	1.6	31.3	10.8	0.4	22.0	4.8
M2	231	36 %	1.5	18.6	6.2	0.8	12.4	2.9
M3	257	40 %	1.7	43.2	12.7	1.0	18.2	4.6
M4	39	7 %	5.9	39.3	19.1	4.8	34.0	15.8



Quaternary

Holocene

- Sand and shells (beach)
- Conglomerate with sandy matrix (alluvial)
- Silt and clay (alluvial plain)
- Sand (mobile dunes)
- Pebbles and boulders (alluvial fans and cones)

Upper Pleistocene

- Shell-bearing conglomerates (marine terraces)

Algeciras-Bujeo Series

Paleocene-Lower Oligocene

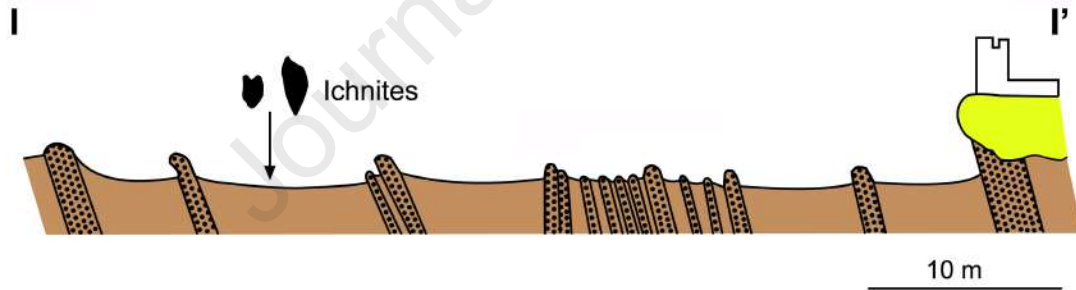
- Red claystones and micaceous sandstones

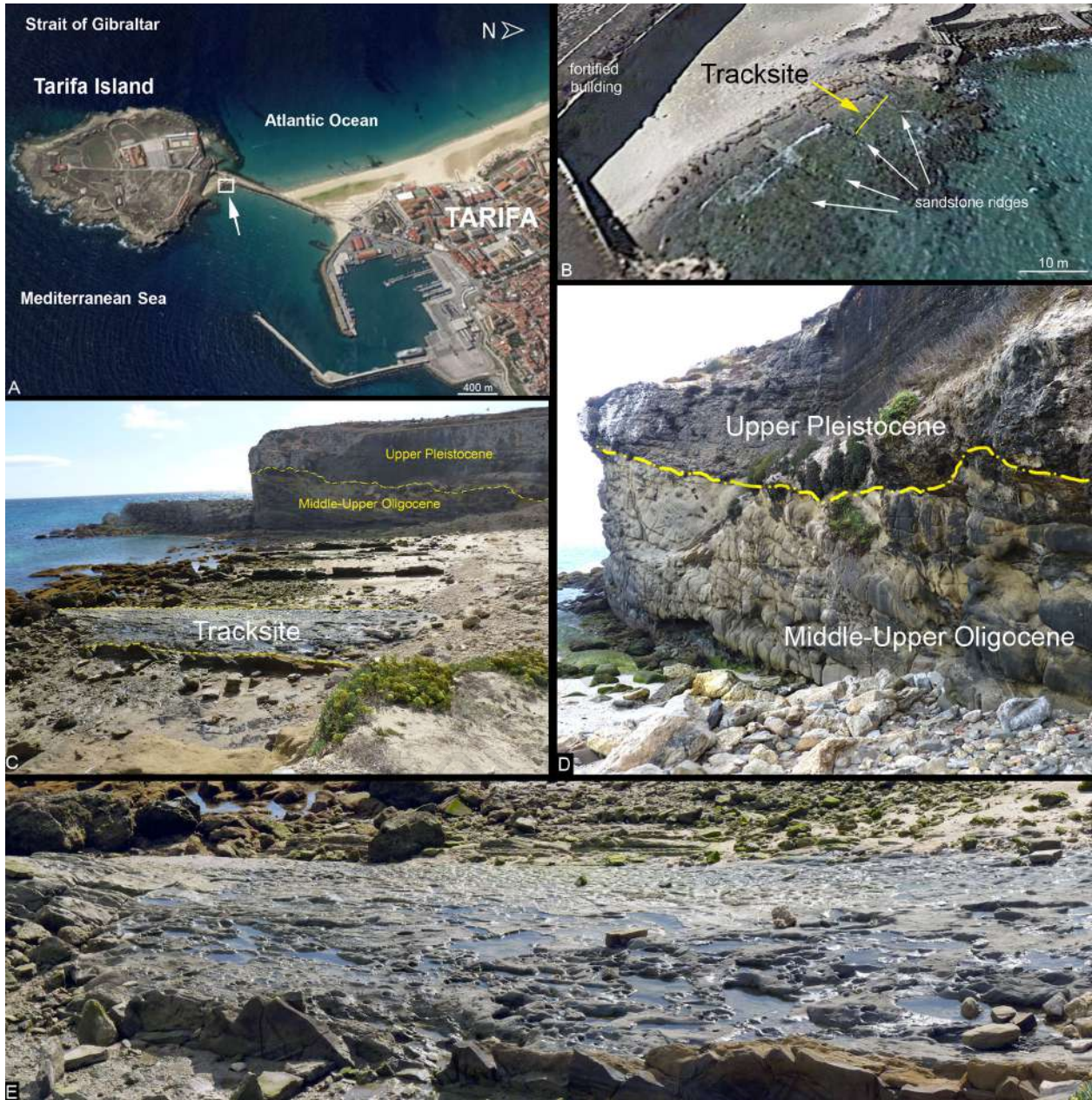
Lower-Middle Eocene

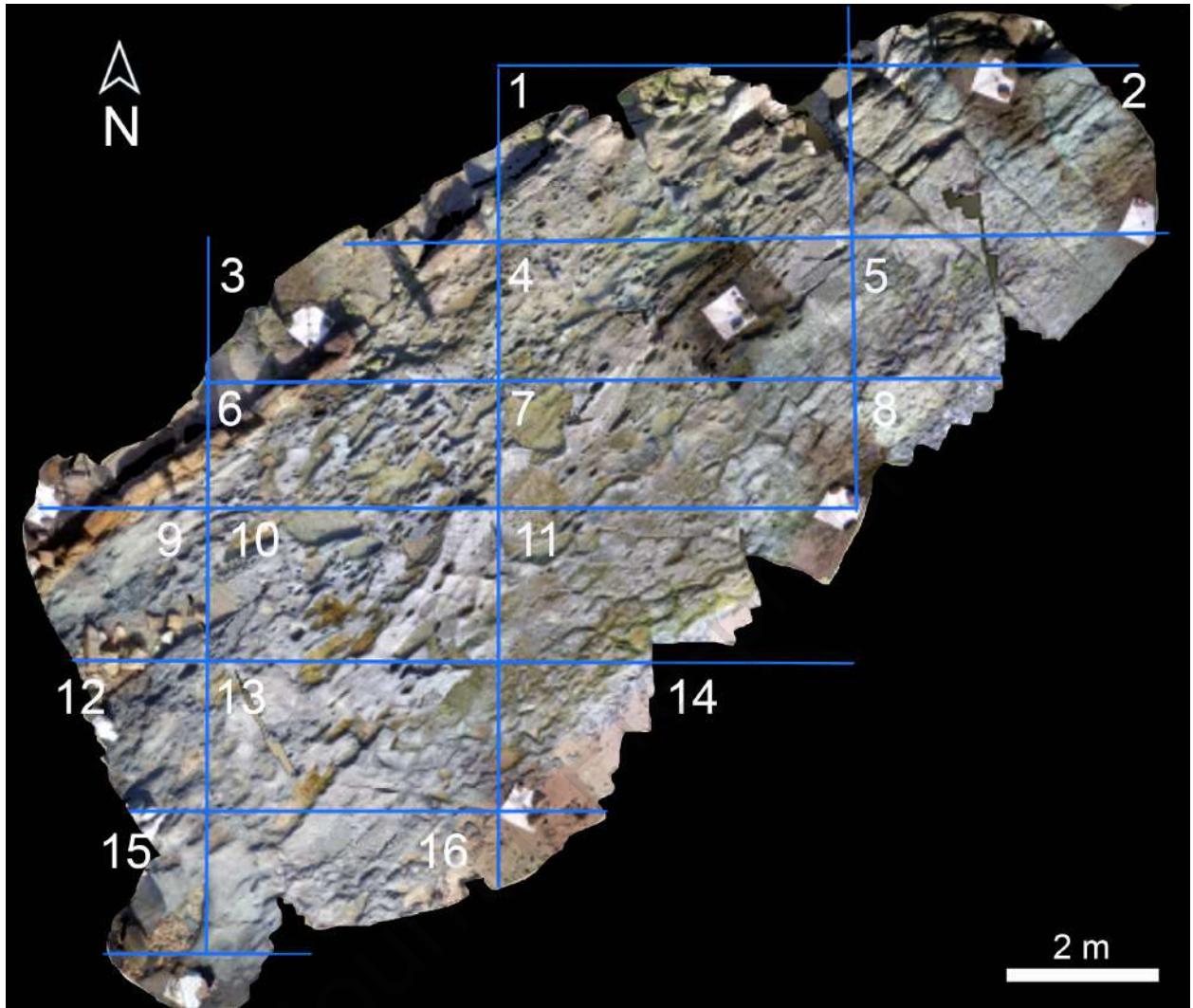
- Bioclastic limestone and red clays

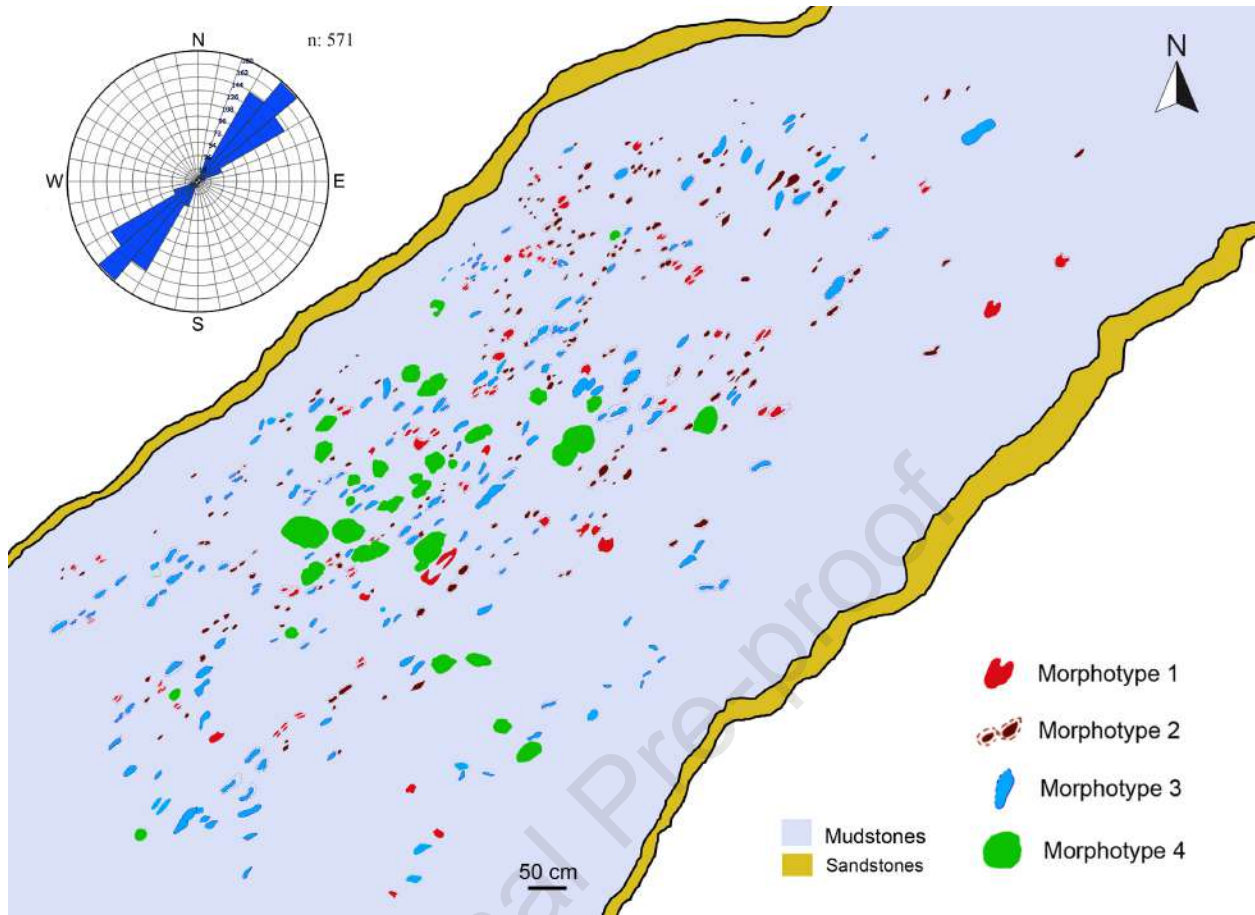
Middle-Upper Oligocene

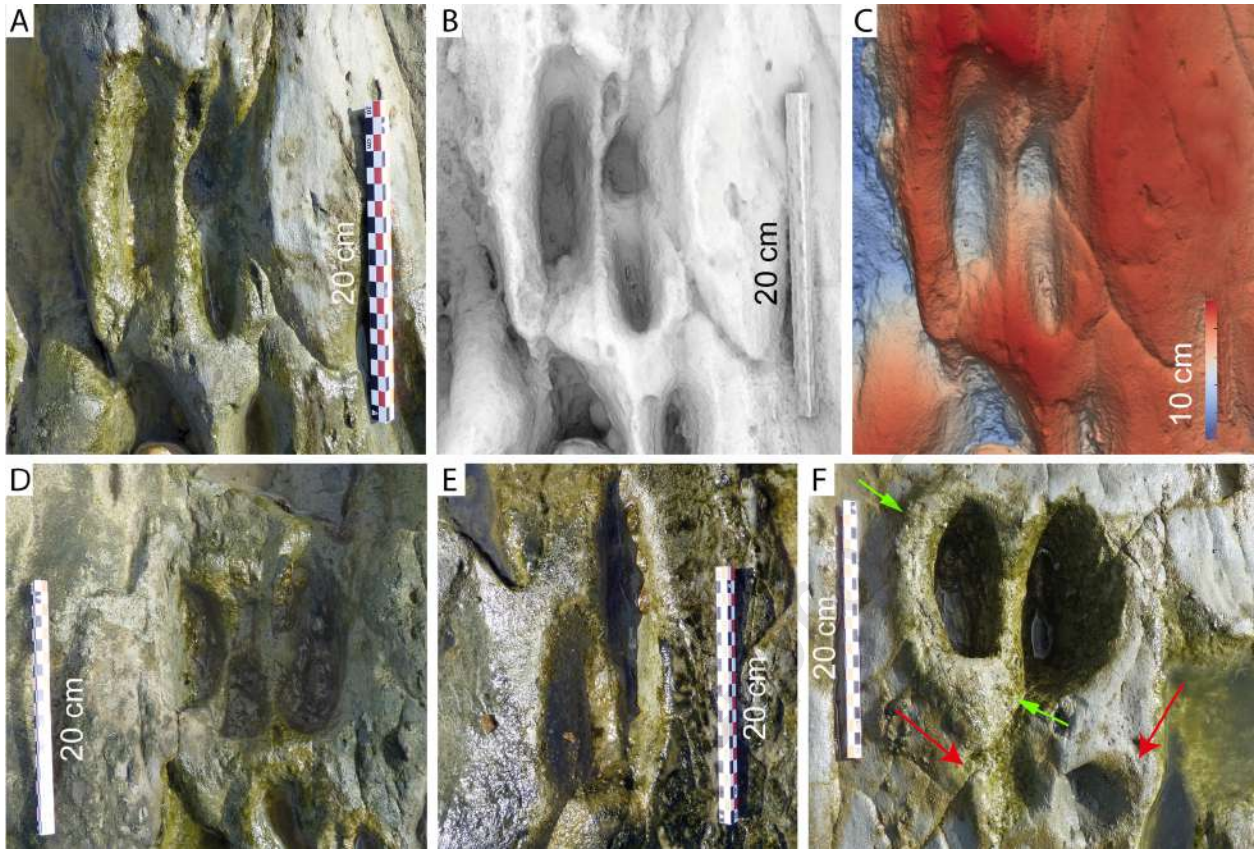
- Marls and micaceous sandstones
- Mudstones and micaceous sandstones
- Sandstones
- ★ Ichnites outcrop



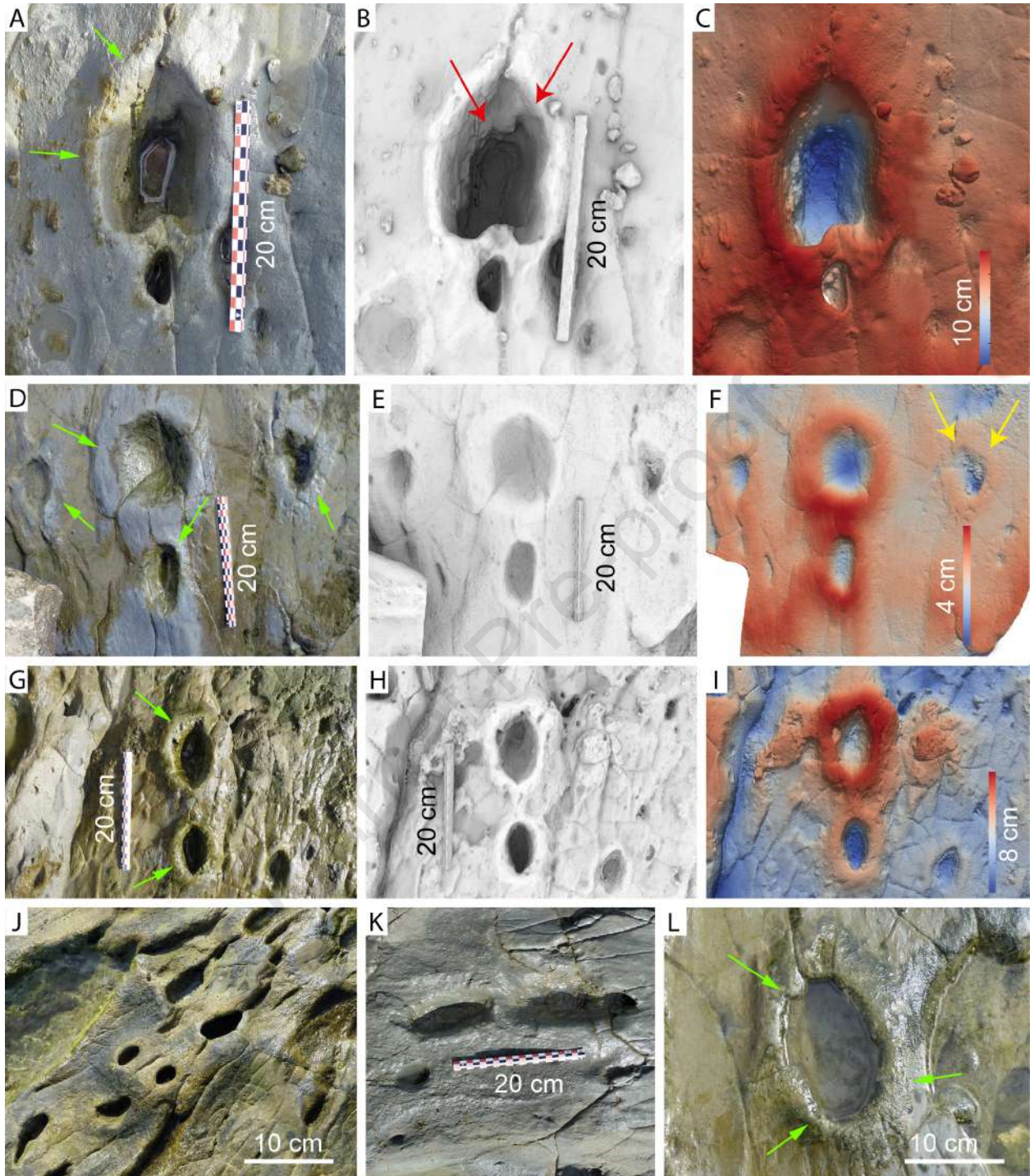


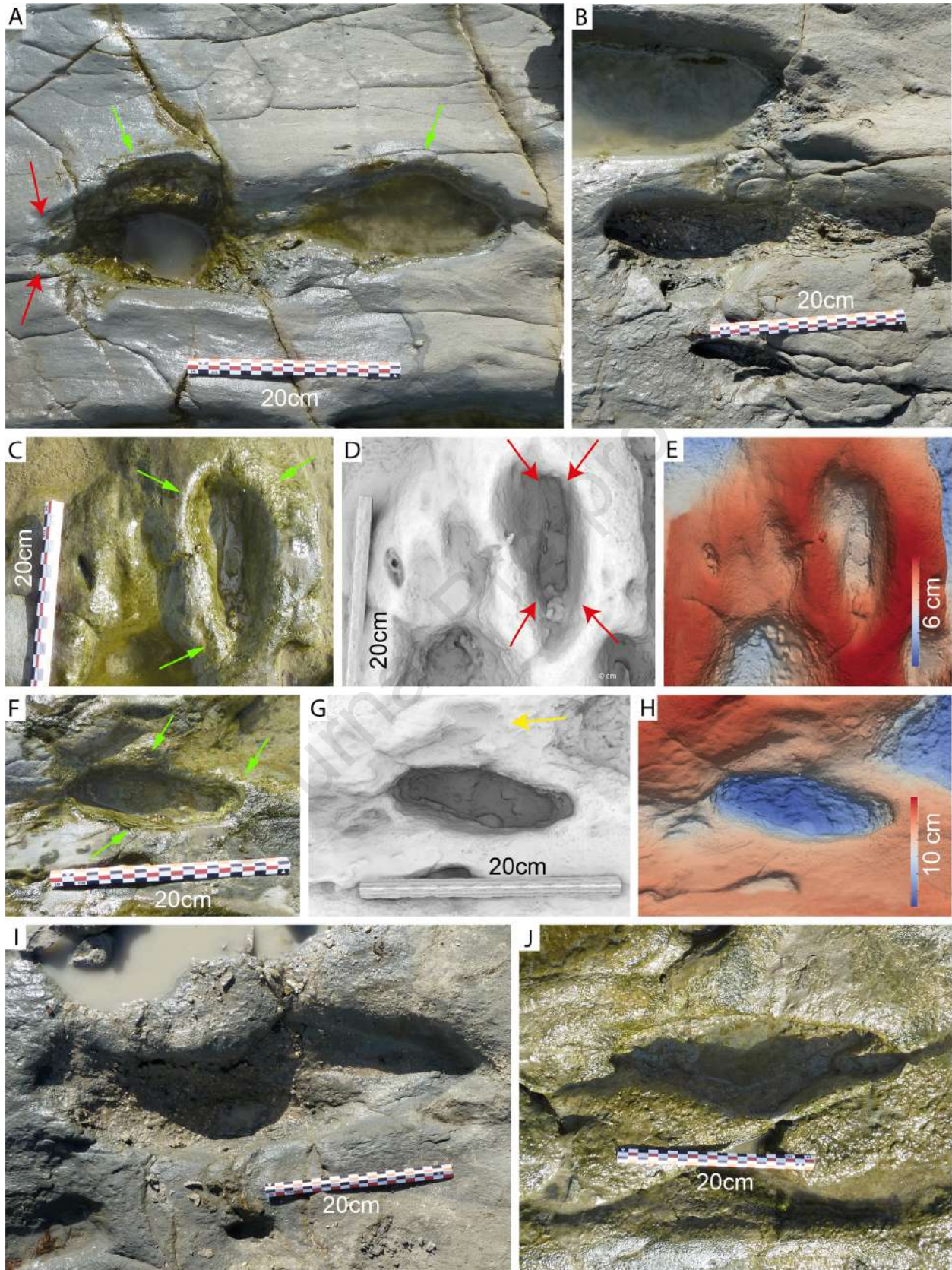


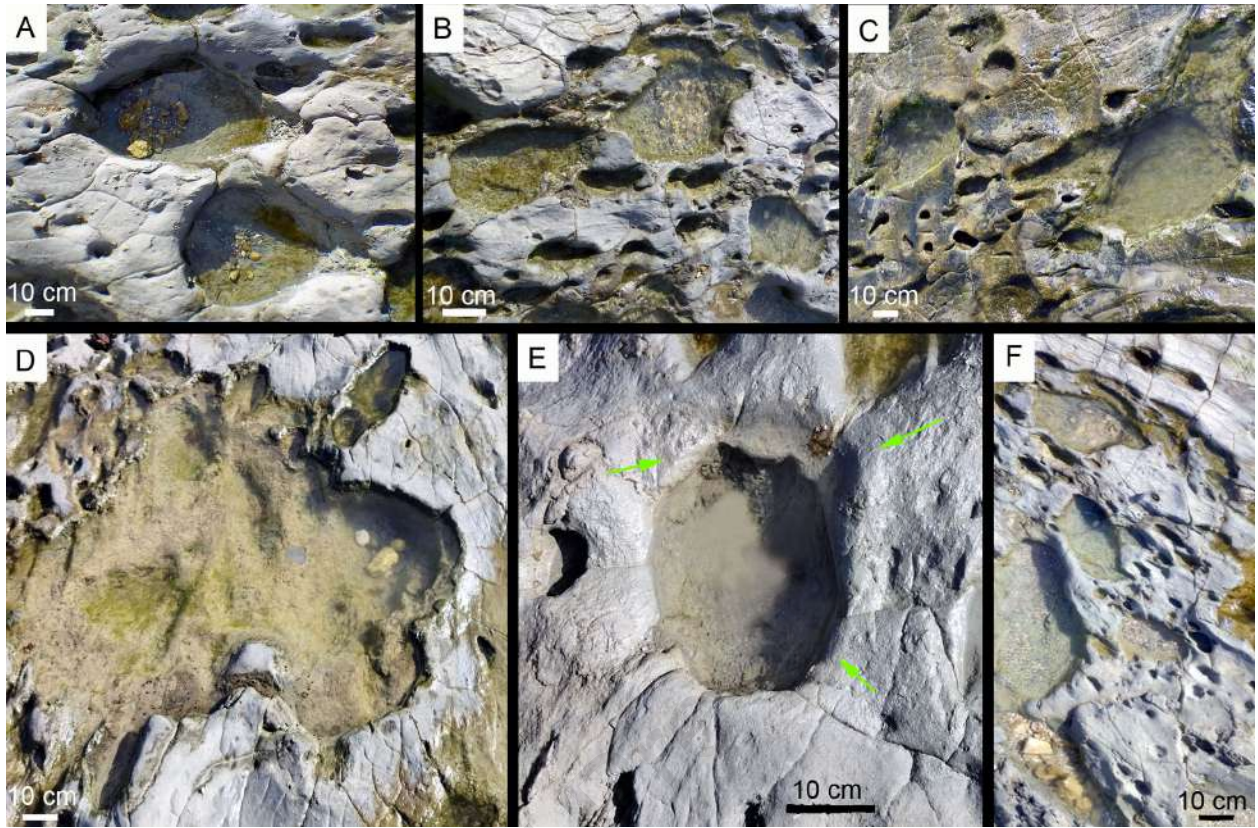


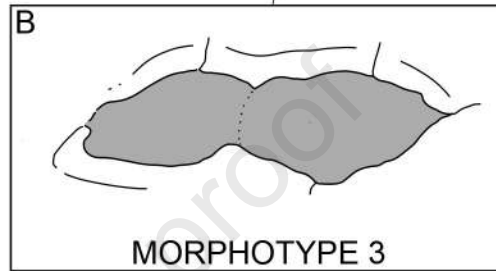
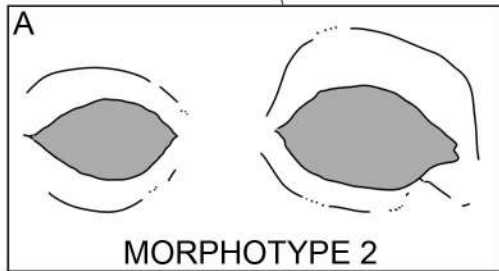
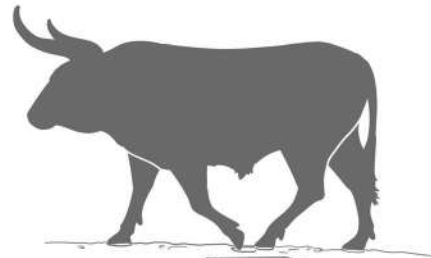
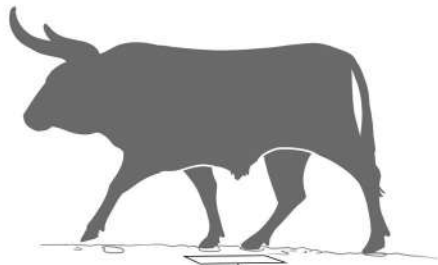


Journal

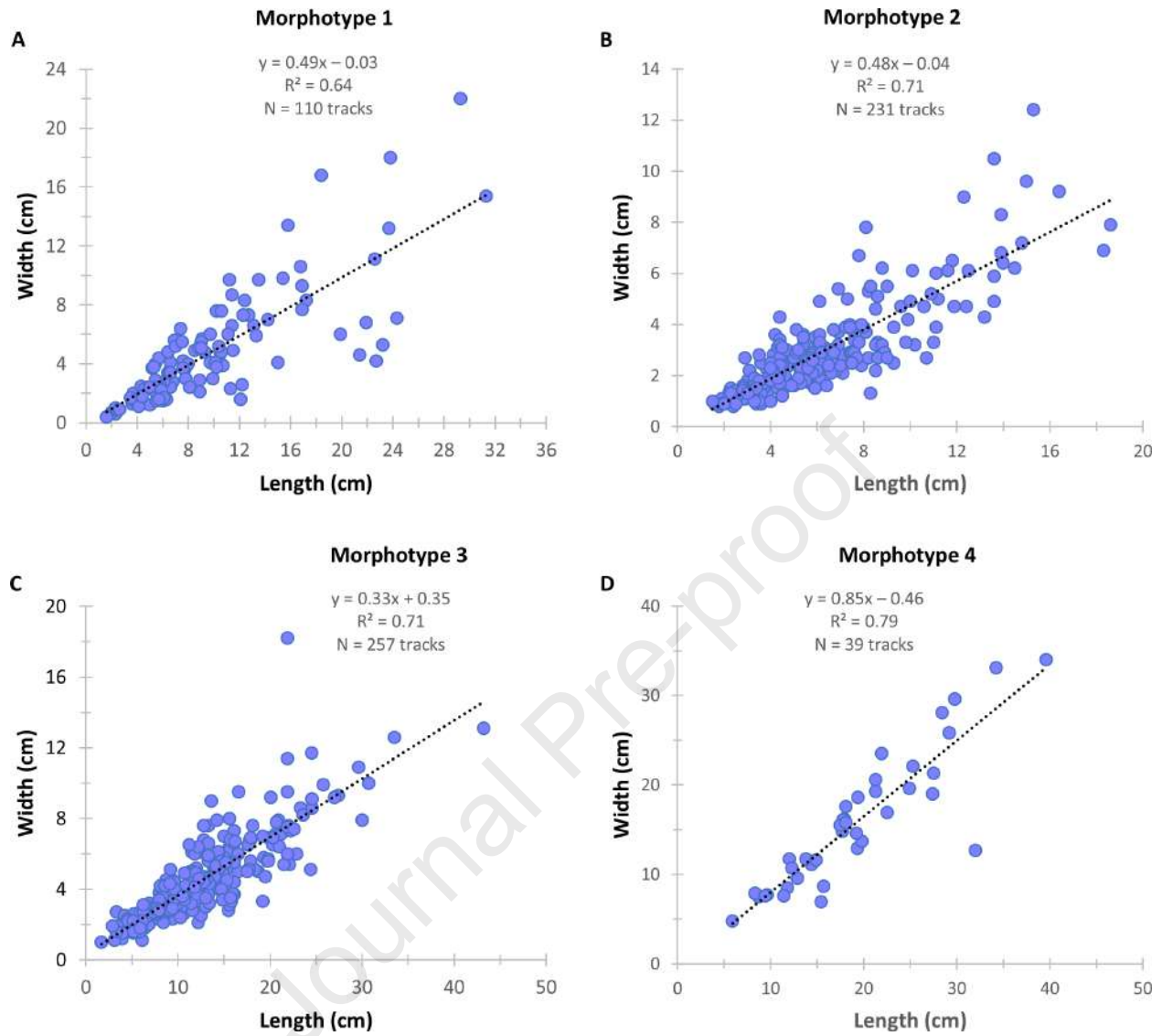


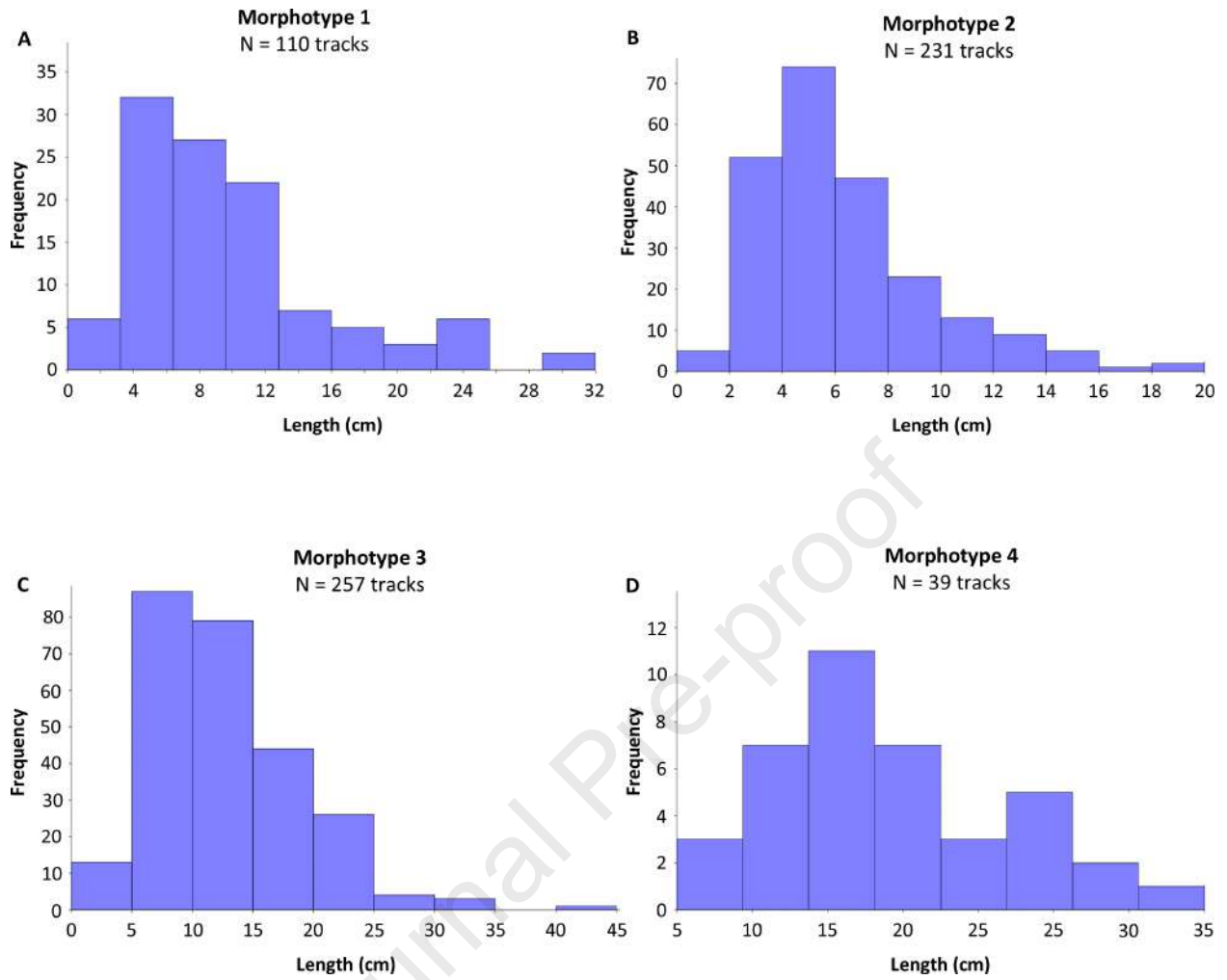


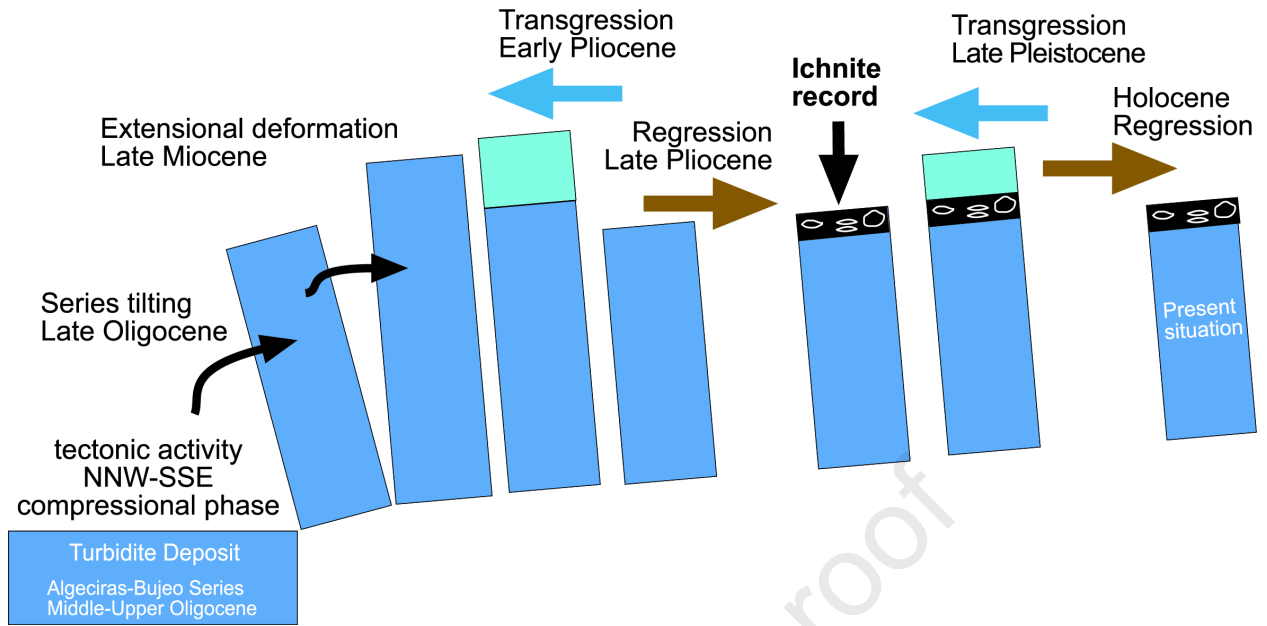




Journal Pre-proof









Journal Pre

Conflicts of interest

We hereby state that we do not have any financial or personal connections with individuals or organizations that could unduly influence our work. Additionally, we confirm that we have no professional or personal interest, of any kind, in any product, service or company that could potentially affect the impartiality of the position presented in this article or its review.

Journal Pre-proof